

NEUROSURGERY PRODUCTS

from
An idea intensive innovation centric company



Manufacturing Quality Products for

Neurosurgery	Cardiothoracic
	Laparoscopic
Orthopedics	Obst. Gynae
Ophthalmology	Burn Treatment
Plastic Surgery	Wound Dressing
Urosurgery	Emergency
Andrology	Pressure
	Dressing
	General Use

SURGIWEAR®
EN ISO 13485 : 2012 COMPANY

Made in India by:
G. Surgiwear Limited
Rasoolpur Jahanganj, Shahjahanpur-242001
Tel: +91 5842-223818 Fax: +91 5842-222190
e.mail: surgiwear@hotmail.com
Delhi: 65454565, Mumbai: 66994258, Ahmedabad: 27545218

www.surgiwear.co.in

www.surgiwear.co.in

SURGIWEAR®
EN ISO 13485 : 2012 COMPANY

SURGIWEAR
EN ISO 13485 : 2012 COMPANY

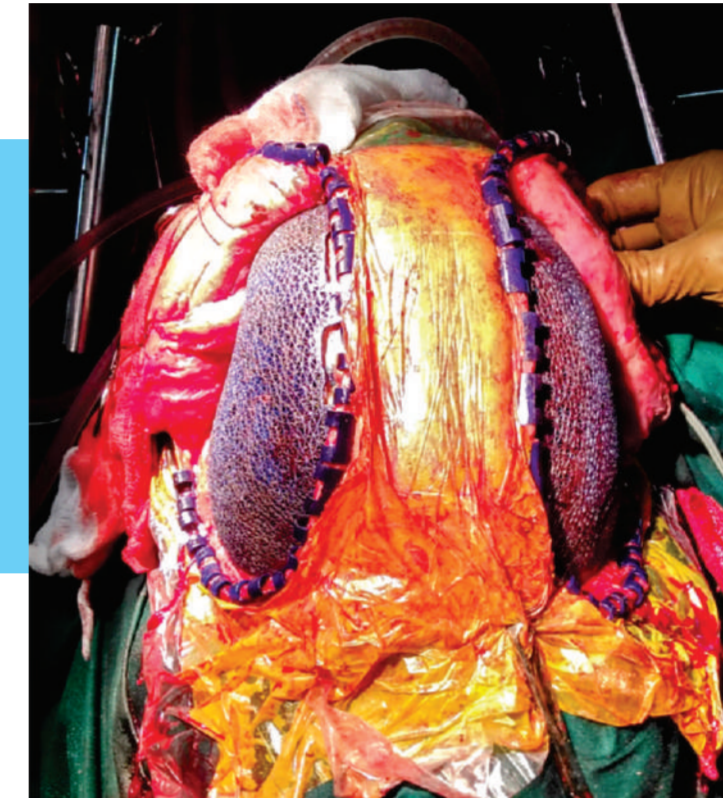
An Indian Medical Device Manufacturing company that delivers life changing solutions through innovative products and services for the healthcare professionals.

In the year 1982 SURGIWEAR was established by Dr. GD Agrawal, for manufacturing of surgical implants and disposable drapes to supply in the global market. His single minded devotion to work, vast knowledge and good business ethics become a popular name in surgical world.

SURGIWEAR is the Indian manufacturer of surgical products, strives to produce & supply the latest and most comprehensive range of surgical implants and disposable drapes. Today SURGIWEAR is well known by plenty of doctors all over the world and the aim of our company is to assist the medical world with the best of its ability and caliber.

SURGIWEAR IS AN IDEA
INTENSIVE INNOVATION
CENTRIC COMPANY
WORKING ON NEW PRODUCTS
EVERYDAY

3DOssAid™ Cranioplasty & other patient specific implants



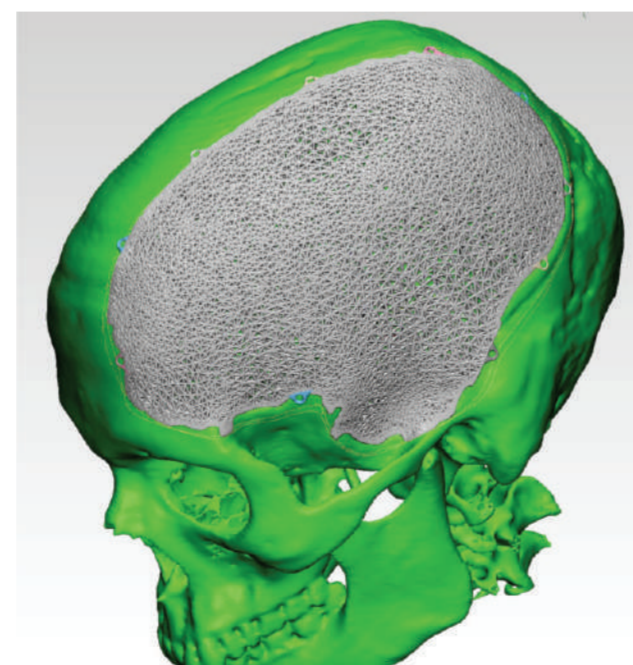
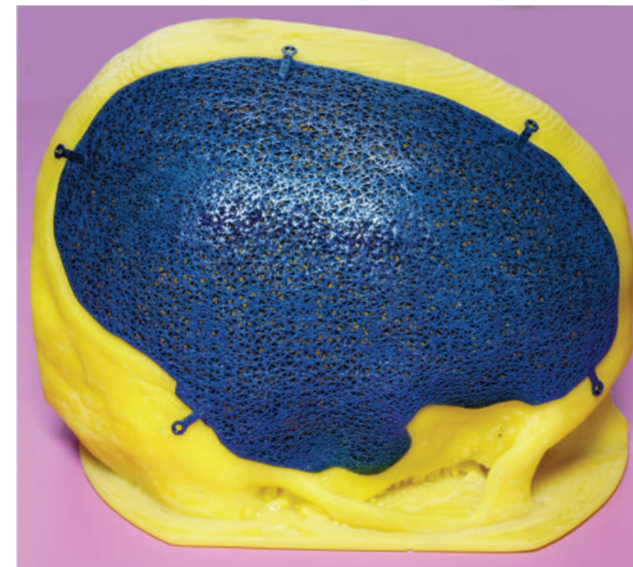
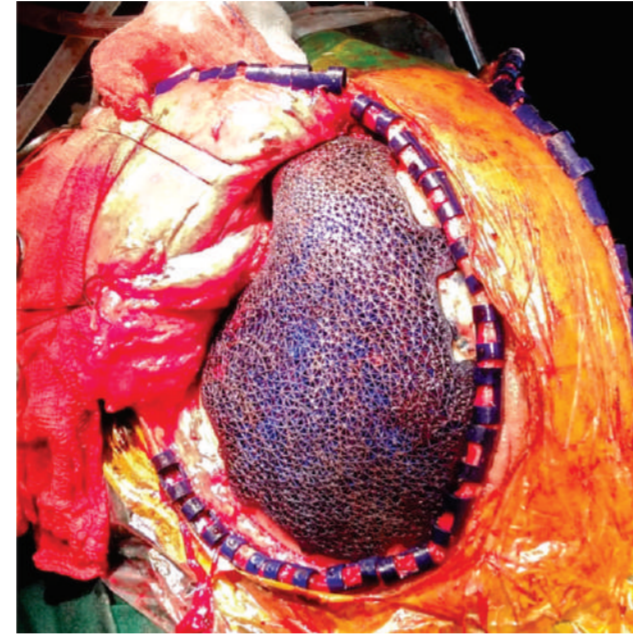
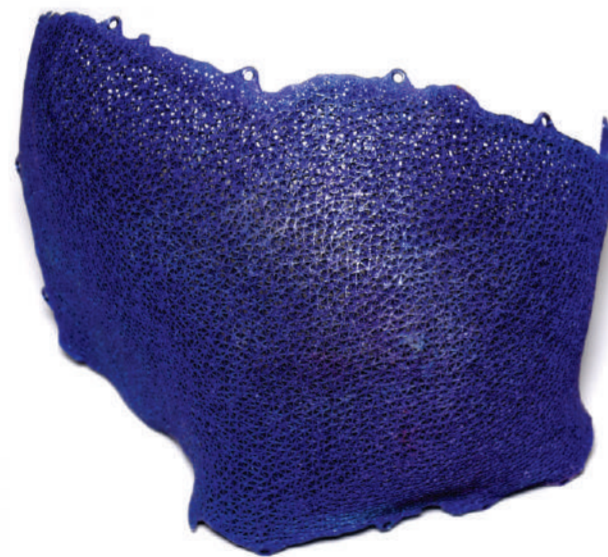
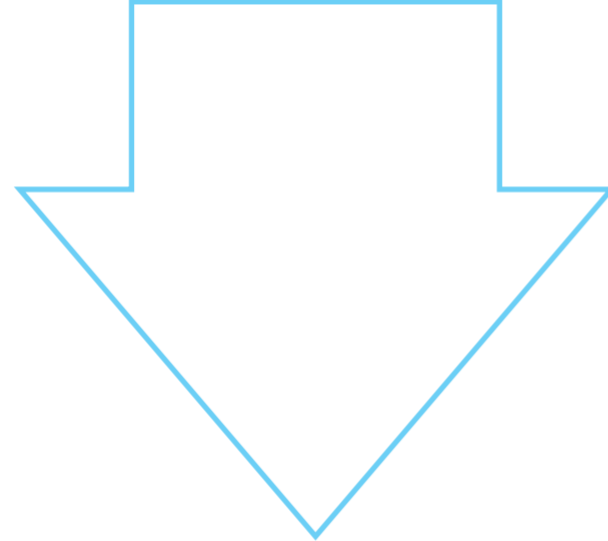
CRANIOPLASTY

- ▶ SURGIWEAR has installed a most modern 3D printing system to make patient specific cranioplasty implants.
- ▶ Patient specific 3D printed implants give a patient natural shape of head. Not possible with any other method of repair of cranial defects.
- ▶ Titanium is most body friendly biomaterial metal. Chances of rejection are minimal.
- ▶ Body tissues will grow in the vicinity of titanium metal.
- ▶ SURGIWEAR has a unique design concept to make the implant light weight & porous.
- ▶ Porosity helps in ingrowth of tissue into the implant.
- ▶ Light weight porous structure has very minimal hot & cold effect. Hot & cold effect troubles the patients in cases of solid implant.



3DOssAid™
Cranioplasty
& other patient
specific implants

SURGIWEAR
can make
titanium implants
for virtually
any part of skull.



Orbital floor

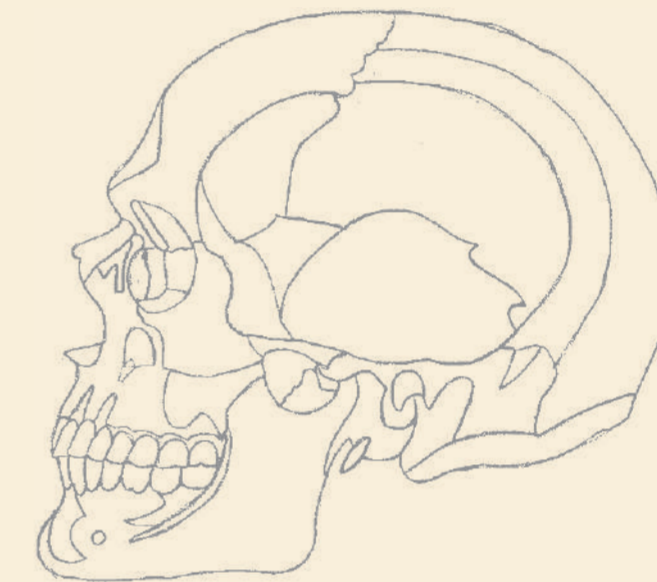


Mandible

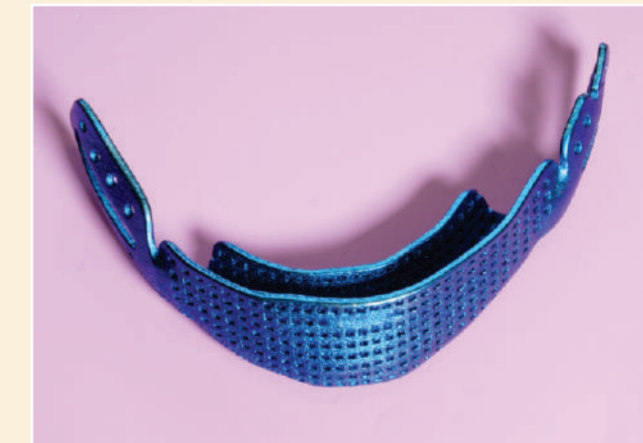


Vertebra

SURGIWEAR®
EN ISO 13485 : 2012 COMPANY



Patient specific
implants for other
parts of body



Bone Grafting Products G-Graft

Natural hydroxyapatite with natural collagen. In cases of blocks partial weight bearing is possible. Useful for bone repair & replenishment.



Granules 10cc pack

0.5-0.9 mm average particle size	GGG1
0.8-1.9 mm average particle size	GGG2
1.8-5.0 mm average particle size	GGG3

Granules 1cc pack

0.5-0.9 mm average particle size	GGG11
0.8-1.9 mm average particle size	GGG21
1.8-5.0 mm average particle size	GGG31

Chips 10cc pack

5x 15 mm average chip size	GGC1
----------------------------	------

Blocks Average Block size and qty

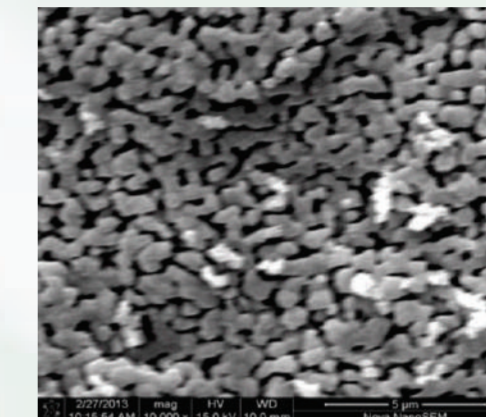
30 x 15 x 6 mm 1 no.	GGB6
30 x 15 x 7 mm 1 no.	GGB7
30 x 15 x 8 mm 1 no.	GGB8
30 x 15 x 9 mm 1 no.	GGB9
30 x 15 x 10 mm 1 no.	GGB10
30 x 15 x 12 mm 1 no.	GGB12
30 x 15 x 14 mm 1 no.	GGB14
30 x 15 x 16 mm 1 no.	GGB16
30 x 15 x 18 mm 1 no.	GGB18
30 x 15 x 20 mm 1 no.	GGB20

Dowel Average Dowel size and qty. One

Dia 8, length 10 mm	GGD8
Dia 10, length 12 mm	GGD10
Dia 12, length 19 mm	GGD12
Dia 13, length 19 mm	GGD13
Dia 14, length 19 mm	GGD14
Dia 15, length 19 mm	GGD15
Dia 12, length 5 mm	GGBP

G-Bone Modified Hydroxyapatite

Surgiwear's Hydroxyapatite products are world renowned and have successful user experience of more than 16 years. Modified hydroxyapatite is a combination of HA 40% (hydroxyapatite) & β -TCP (beta-tricalcium phosphate) is 60%. It consists of nano crystal agglomerates. It has excellent osteo-conductive properties bordering to the level of osteo-inductive property. With this material bone healing is very fast.



Microstructure of as-synthesized Modified HA block



Granules	10cc Pack	
	0.1-0.4 mm average Particle Size	MHAG1
	0.4-0.9 mm average Particle Size	MHAG2
	0.8-1.8 mm average Particle Size	MHAG3
	1.8-3 mm average Particle Size	MHAG4



Granules	1cc Pack	
	0.1-0.4 mm average Particle Size	MHAG11
	0.4-0.9 mm average Particle Size	MHAG21
	0.8-1.8 mm average Particle Size	MHAG31
Blocks	Average Block size & quantity	
	1 x 0.5 x 0.5 cm 20 nos.	MHAB1
	1 x 1 x 2 cm 5 nos.	MHAB2
	1 x 1.5 x 2 cm 3 nos.	MHAB3
	2 x 3 x 0.3 cm 1 no.	MHAB4
	2 x 2 x 0.5 cm 1 no.	MHAB5

Supplied ready to use Gamma-ray sterilized in double peel open packaging.

SURGIWEAR[®]
EN ISO 13485 : 2012 COMPANY

G-Bone Synthetic Hydroxyapatite

Surgiwear's Hydroxyapatite products are world renowned and have successful user experience of more than 16 years. Synthetic Hydroxyapatite is a pure nanocrystalline HA. Nano crystals mimic biological HA, present in our human body. Here healing is faster than other macrocrystal HA available from other sources. It consists of nano crystal agglomerates. It has excellent osteo-conductive properties.



Granules	10cc Pack	
	0.1-0.4 mm average particle size	SHAG1
	0.4-0.9 mm average particle size	SHAG2
Granules	1cc Pack	
	0.1-0.4 mm average particle size	SHAG11
	0.4-0.9 mm average particle size	SHAG21

Blocks	Average Block size and quantity	
	1 x 0.5 x 0.5 cm 20 nos	SHAB1
	1 x 1 x 2 cm 5 nos.	SHAB2

Dowel
These dowels are made of nano crystalline HA with absorbable fibers. These are very strong due to fibers.

Average Dowel size	
Dia 12 length 14 mm	SHAD1
Dia 14 length 16 mm	SHAD2
Dia 16 length 18 mm	SHAD3
Dia 18 length 20 mm	SHAD4
Dia 20 length 22 mm	SHAD5

Injectable HA nano crystalline powder
This powder can be mixed with any plasma expander to make an injectable paste. It can be injected through a thick needle (14 gauge) to the site. useful for non-union of bone.

Synthetic HA Powder SHAP

Soft Synthetic HA
This unique HA granule becomes soft like sponge on wetting with saline or water. It can be molded like putty. It can be easily used to fill cavities.

Soft Granules 10 cc pack	
0.8-1.8 mm average particle size	SHAG3
1.8-3 mm average particle size	SHAG4

Soft Granules 1cc pack
1 cc packaging has 4 small packaging for dental use. One 1/4 packaging is more than sufficient for one dental socket filling after extraction. By virtue of being soft like sponge it will be held in place & will not wash out.

0.8-1.8 mm average particle size	SHAG31
----------------------------------	--------

Soft Carve-able blocks
These blocks when wet with saline or water can be carved using sharp blade.

1 x 1.5 x 2 cm 3 nos	SHAB3
2 x 3 x 3 cm 1 no.	SHAB6

SURGIWEAR®
EN ISO 13485 : 2012 COMPANY

G-Bone Cement Calcium Phosphate cement



The non ceramic Hydroxyapatite bone material has two components. The powder is made of tri calcium phosphate and tetra calcium phosphate. The fluid has different sodium and calcium salts. The two parts are mixed and putty like material is obtained. It can be used to fill the defects

After mixing it is usable for 3-5 minutes. Adding some drops of water can prolong usability but it may disturb ultimate strength. The hardening process continue and ultimate hardening may take 12-24 hours.

It can also be mixed with antibiotics for slow release of antibiotic at the site.

Supplied sterile. The kit contains powder sachet, liquid ampule, spatula, syringe and mixing dish.

G-Bone CPC	
2 gm packing	GBCEM1
5 gm packing	GBCEM2



QOssHeal™

Quick bone healing
Quick setting
Calcium Hydroxyapatite
injectable cement

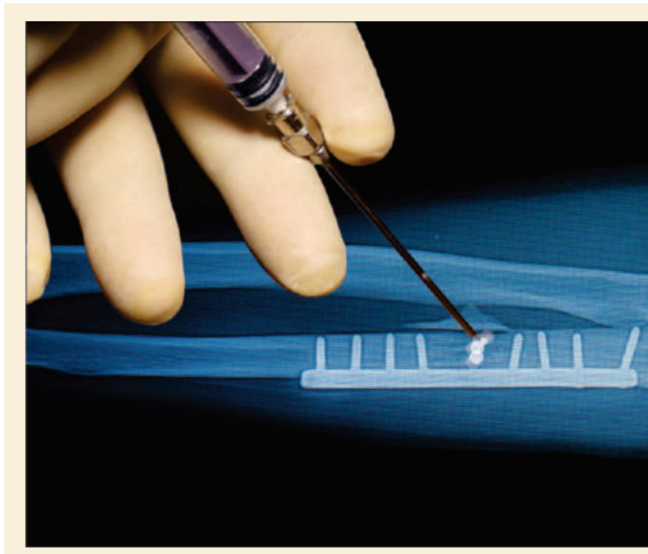
Give your patients safety of faster bone healing and shield them from non union & delayed union.

Close cranial flap by using This HA cement

SURGIWEAR's own research product. It is injectable. It sets in 10-20 minutes. It is osteo conductive & it is osteoinductive as well. When injected between broken bone ends, it will make bone heal in half the time. Lesser chances of non union or delayed union.

The idea is to provide bone building blocks Ca & PO4 at the site of bone healing. Injection between the ends of broken bones displaces tissue, blood clots from between broken bone ends. It helps in conduction of new bone formation.

This cement also acts as osteoinductive material and promotes bone healing by minimum factor of two. It will also prevent non union & delayed union of bones, a nightmare of all orthopedic surgeons.



Instructions for use:

1. Taking all aseptic precautions open the pouch. Take out all contents and keep these on a sterile sheet.
2. Empty the sachet of powder on the dish. Take a new syringe. Load syringe with water for injection. Take only exact qty of water as mentioned in the pouch label.
3. Slowly pour water on the powder mixing with the help of spatula.
4. A paste should be formed. It should be toothpaste like consistency.
5. Remove plunger from syringe. Fill the syringe from behind with the paste. Push the plunger and take out air from syringe. Attach the long 14 gauge needle provided with in the packet.
6. Inject the paste between broken ends of bone under C arm else under direct vision.

You can mix antibiotics with powder. But the total quantity of water should remain same.

Presentation

QOssHeal (Injectible HA) (2 gram)	IHA 02
QOssHeal (Injectible HA) (5 gram)	IHA 05
QOssHeal (Injectible HA) (10 gram)	IHA 10

Instructions for use of QOssHeal

Taking all aseptic precautions open the pouch. Take out all contents and keep these on a sterile sheet.

Empty the sachet of powder on the dish. Take a new syringe. Load syringe with water for injection. Take only exact qty of water as mentioned in the pouch label.



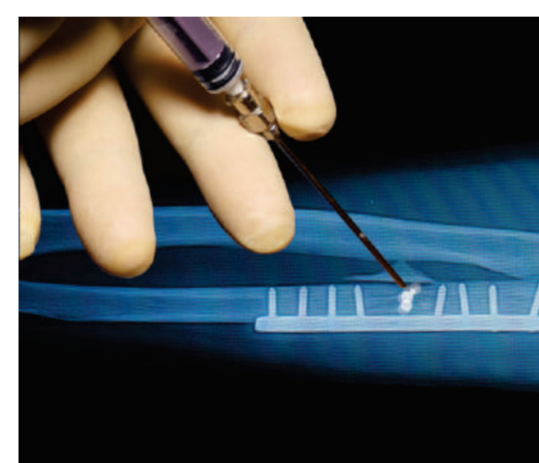
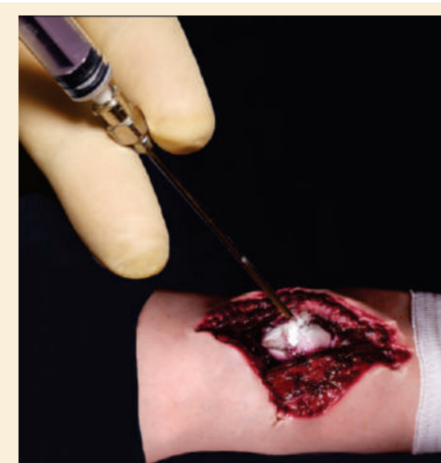
Slowly pour water on the powder mixing with the help of spatula.



A paste should be formed. It should be toothpaste like consistency.



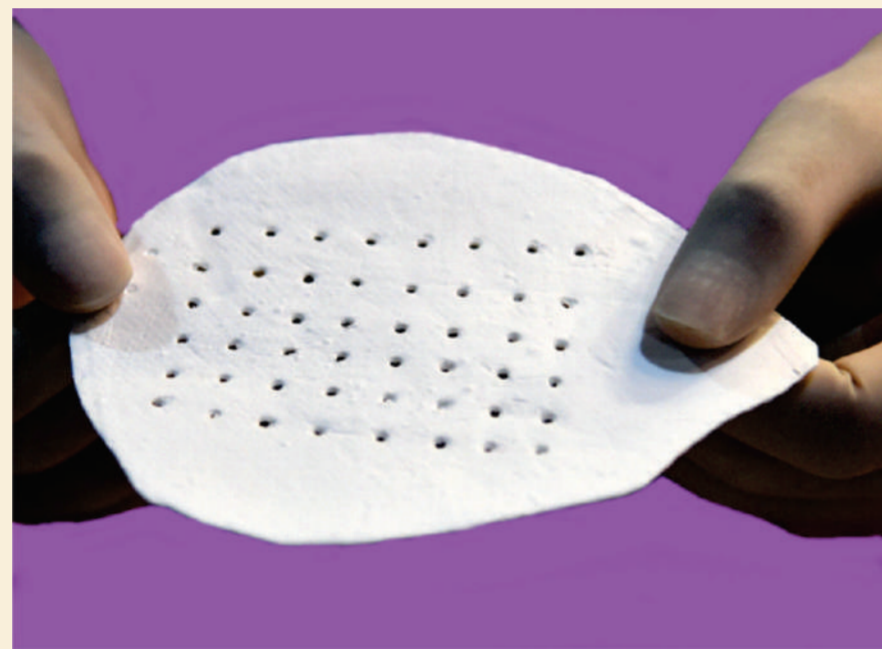
Remove plunger from syringe. Fill the syringe from behind with the paste.



Inject the paste between broken ends of bone under C arm else under direct vision.
You can mix antibiotics with powder. But the total quantity of water should remain same..

SURGIWEAR®
EN ISO 13485 : 2012 COMPANY

OssPatch™ Soft Hydroxyapatite Patch



Hydroxyapatite is brittle and difficult to shape substance. Can not be stitched or formed. Can not be cut easily. To overcome this difficulty, SURGIWEAR has developed soft Hydroxyapatite patch
OssPatch™

It is made of 70% polycaprolactone & 30% Hydroxyapatite. PCL with HA is electrospun to generate nano fibers These fibers are deposited layer by layer and this patch is formed.

Nano fibers of PCL are good breeding ground for osteoblasts. The patch has affinity with osteoblast. There are chances of bone forming in and around this patch. Presence of HA conducts bone formation. HA is osteoconductive.

You can cut it in any shape. You can form it with hands. Although very carefully. You can stitch it very easily.

We make it with holes to prevent accumulation of fluid on any side. There will not be any dead fluid collection.

Instructions for use:

- * After dissection of are and exposure of defect. Take a sterilized paper sheet and cut a dummy to fit the defect. Please keep 5-7 mm extra margin to overlap the surrounding bone.
- * If dummy is OK. use this dummy to cut the OssPatch to shape of defect plus 5-7 mm margin.
- * Scrape 5-7 mm of of bone margin going to be covered by the patch.
- * Place shaped OssPatch on the defect. Stitch it with surrounding periosteum.
- * Close the skin & other tissues.

USES of OssPatch:

Neurosurgery:

- * OssPatch is very good for repair of cranial defects. In patients under the age of 18 years metallic or plastic implants are not indicated. This patch will allow natural bone formation and preventing head deformities due to metallic or plastic implants.
- * In cases of spina bifida spinal defect can be covered with OssPatch. In due course bone will form there.
- * smaller defects in adults too can be repaired using OssPatch.
- * Defects at the base of skull or roof of maxillary sinuses, orbital fossa wall can be nicely repaired using OssPatch

Ophthalmic surgery:

- * For repair of orbital fossa.

Orthopedic surgery:

- * In cases of fracture with multiple fragments, OssPatch can be used to wrap the fragments together. Thus promoting faster bone healing and prevention of formation of stray bone fragments.
- * OssPatch can be used in other types of bone repairs as well.

Dental surgery:

- * For covering hydroxyapatite fillings of alveolous, dental ridge & repair of mandible / maxilla.
- * For repair of orbital fossa

Plastic surgery:

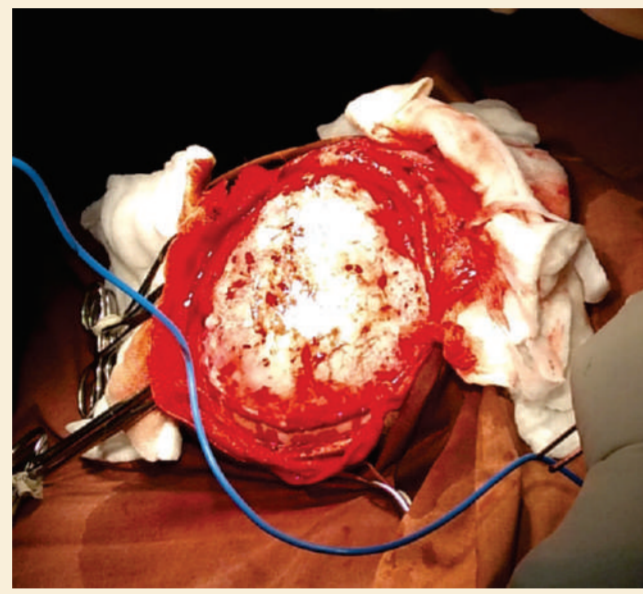
- * For repair of facial defects.

OssPatch Mesh Cranial Fixation System PCL+HA

Thickness	Size	Code no.
0.5mm	2X2 cm	05CF5PCLHA22
1.0mm	2X2cm	10CF5PCLHA22
0.5mm	3X5cm	05CF5PCLHA35
1.0mm	3x5cm	10CF5PCLHA35
0.5mm	5x8cm	05CF5PCLHA58
1.0mm	5x8cm	10CF5PCLHA58
0.5mm	8x10cm	05CF5PCLHA810
1.0mm	8x10cm	10CF5PCLHA810
0.5mm	10x12cm	05CF5PCLHA1012
1.0mm	10x12cm	10CF5PCLHA1012
1.5mm	10x12cm	15CF5PCLHA1012
0.5mm	12x15cm	05CF5PCLHA1215
1.0mm	12x15cm	10CF5PCLHA1215
1.5mm	12x15cm	15CF5PCLHA1215
0.5mm	15x20cm	05CF5PCLHA1520
1.0mm	15x20cm	10CF5PCLHA1520
1.5mm	15x20cm	15CF5PCLHA1520

SURGIWEAR®
EN ISO 13485 : 2012 COMPANY

Repair of cranial defect of a young girl using OssPatch (soft hydroxyapatite patch)



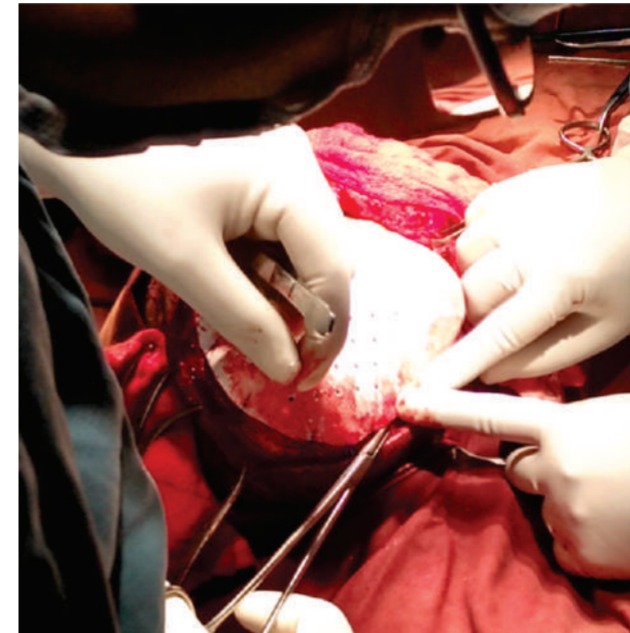
Initial exposure of the brain with duramater



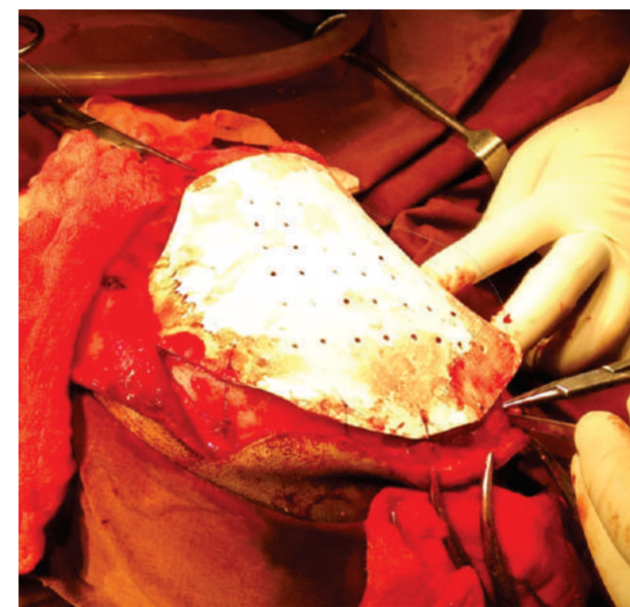
OssPatch cut as per shape of defect.



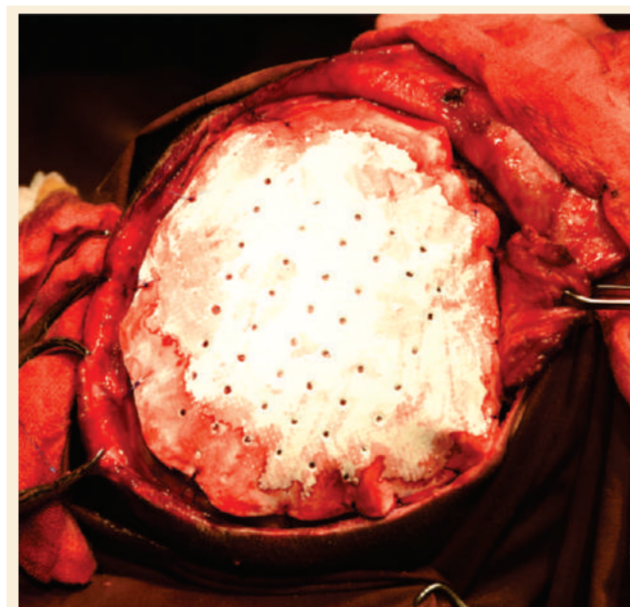
OssPatch being placed on the cranial defect



OssPatch being stitched with the periosteal tissue of the patient



Stitching continues.



Final picture on completion of stitching of the OssPatch with periosteal tissue

SURGIWEAR
EN ISO 13485 : 2012 COMPANY

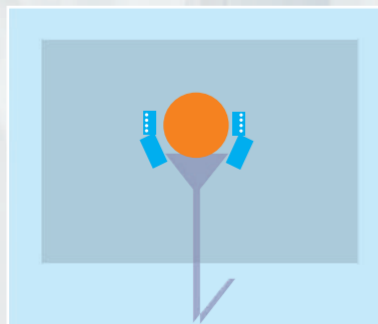
Disposable Drapes



D901 with openable window



Eco E911 & Eco 35E911



Kraniotomy Drape

This drape is used for all kinds of craniotomies. It collects all fluid & directs to connected tube.

It is a complete drape. No other drape is required for the procedure.

- Level 4 protection as per ANSI/AAMI Standards.
- High performance critical area protection as per European Union standards

D901

It comes with front openable transparent window. very convenient for DBS surgery. Anaesthetist can observe tube connections. If required window can be opened and resealed.

Material : 68-77 gsm, spun lace fabric water repellent

Sheet Size 1.6 x 3.2 m
Adhesive area 20 cm dia
2 pockets 15 x 18 cm
2 Tube & Cable holders
Side Channels & collecting funnel

Poly sheet lining 1.20 x 1.20 m

INT I921

Material : 68-77 gsm
spun lace fabric water repellent

Sheet Size 2.6 x 3.6 m
Adhesive area 20 cm dia
2 pockets 15 x 18 cm
2 Tube & Cable holders
Side Channels & collecting funnel

Poly sheet lining 1.20 x 1.20 mm

ECO E911

Material : 50 gsm
SMS Polypropylene fabric water repellent

Sheet Size 1.6 x 3.2 m
Adhesive area 20 cm dia
Side Channels & collecting funnel

Poly sheet lining 1.20 x 1.20 m

ECO 35E911

Material : 35 gsm
SMS Polypropylene fabric water repellent

Sheet Size 1.6 x 3.2 m
Adhesive area 20 cm dia
Side Channels & collecting funnel

Poly sheet lining 1.20 x 1.20 m



Bi-temporal Kraniotomy drape

Many times bi-temporal craniotomy is required specially in case of de-compressive craniotomy. This drape is very useful in such cases as well as unitemporal craniotomy. It has two drainage points on the sides.

D901T

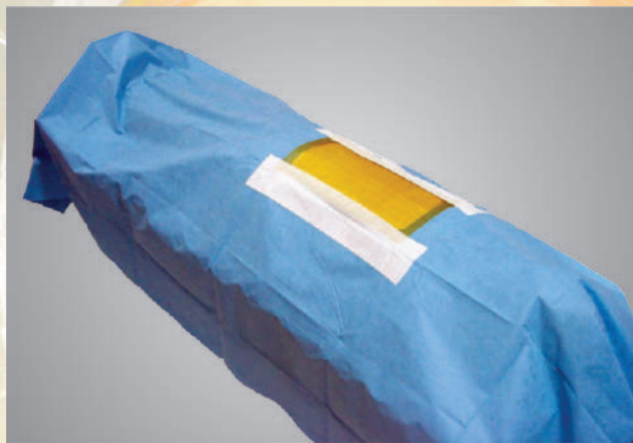
It comes with front openable transparent window. very convenient for DBS surgery. Anaesthetist can observe tube connections. If required window can be opened and resealed.

Material : 68-77 gsm, spun lace fabric water repellent

Sheet Size 1.6 x 3.2 m
Adhesive area 20 x 35 cm rectangular
2 pockets 15 x 18 cm
2 Tube & Cable holders
2 Side Channels & collecting funnel
Poly sheet lining 1.20 x 1.20 m

SURGIWEAR®
EN ISO 13485 : 2012 COMPANY

Lamino-spinal Drape



This drape is used for all kind of Spinal surgeries & Laminectomies etc

Level 4 protection as per ANSI/AAMI Standards. High performance critical area protection as per European Union standards.

D106

Material : 68-77 gsm
spun lace fabric water repellent

Sheet Size 1.5 x 3 m
Incise Sheet 15 x 35 cm
2 pockets 12 x 35 cm
1 Tube & Cable holders
work pad 2no. 10x50 cm
Poly sheet lining 1.20 x 1.20 m

E116

Material : 50 gsm
SMS polypropylene water repellent
Sheet Size 1.5 x 3 m
Incise Sheet 15 x 35 cm
Poly sheet lining 1.20 x 1.20 m

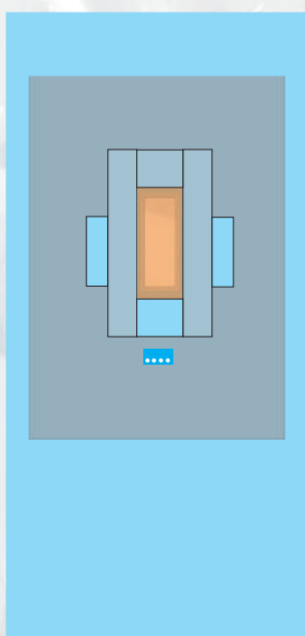
35E116

Material : 35 gsm
SMS polypropylene water repellent
Sheet Size 1.5 x 3 m
Incise Sheet 15 x 35 cm
Poly sheet lining 1.20 x 1.20 m

INT I126

Material : 68-77 gsm
spun lace fabric water repellent

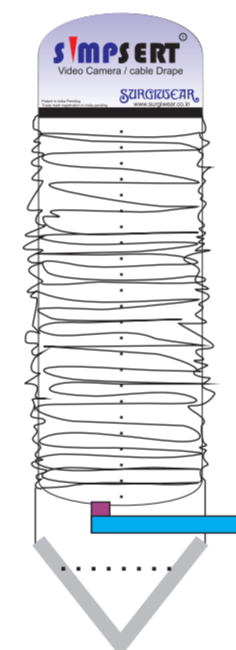
Sheet Size 3.1 x 2.4 m
Incise Sheet 15 x 35 cm
Poly Sheet Lining 1.20 x 1.20 mt
2 pockets 12 x 35 cm
1 Tube & Cable holders
work pad 2 no. 10x50 cm



Shunt Drape



for shunt implantation surgery
single person can apply
this drape in less than 90 seconds
Size 120 x 210 cm
incise area 70x15 cm
Shunt Drape D203



Simpserst video camera cable cover Ultrasound cover

Length 2.5 m width 15 cm
Video camera cable cover D904

Per-operative ultrasound cover D905

Head & Eye Shield To protect operating team from infections of patient

Head & Eye Shield D904



SURGIWEAR
EN ISO 13485 : 2012 COMPANY

O-Scope Drape Operating Microscope Drape

E214L 125 x 200cm
with three pair eye lens cover

E214M 100 x 160 cm
with two pair eye lens cover

E214S 90 x 120 cm
with one pair eye lens cover
supplied sterile ready to use.



C-Arm Cover

two part D306
three part D306-3

Full C-Arm Cover

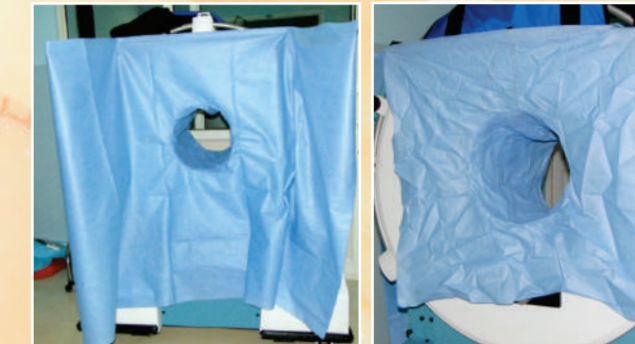
D307



Portable CT Drape

For covering Portable CT machine
for peroperative CTScan

PCT Drape D205



Iodrape-2 with frame

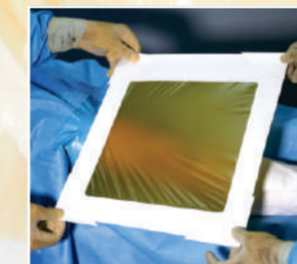
Adhesive with Povidone Iodine

For covering incision area in all kind of surgeries
Iodine adhesive coated (45 GSM approx) PU film

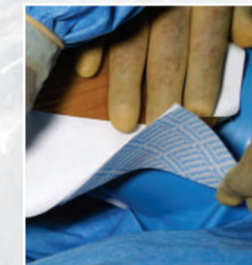
Code Number	Size	Adhesive Area
ID1010	15 X 10 CM	10 X 10 CM
ID1020	15 X 20 CM	10 X 20 CM
ID6025	90 X 25 CM	60 X 25 CM
ID3025-2	50 X 25 CM	30 X 25 CM
ID3535-2	50 X 35 CM	35 X 35 CM
ID6045-2	90 X 45 CM	60 X 45 CM
ID6060-2	90 X 60 CM	60 X 60 CM
ID6090-2	90 X 90 CM	60 X 90 CM



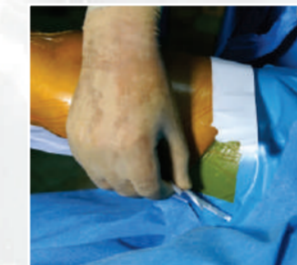
Remove release liner
by holding corners



Two persons hold all four corners
apply on the place, third person
will press in the centre first



Remove release corners
& press



Finally remove the paper frame

Baby Drape

For all kind of surgeries on baby
also used as low cost drape

Translucent soft polyfilm
Size 1.2 x 1.2 m incise area 25 x 20 cm
Baby Drape D201



SURGIWEAR
EN ISO 13485 : 2012 COMPANY

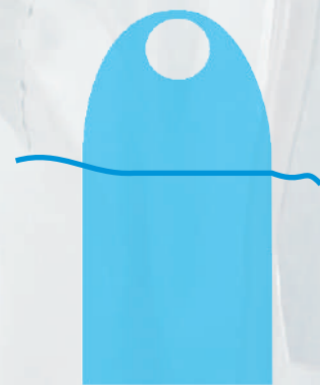


Plain drapes

For Covering patient body & instrument trolleys during surgery

Product Name	Product Code	Size			
Material: 25 micron thick PE hygiene film			Mayo's Trolley Cover Small NW	E314	130X75 cm
			Mayo's Trolley Cover Large NW	E315	150X123 cm
Material: Spun lace Non woven			Neo natal sheet	D504	75 X 80 cm
Material: Spun lace Non woven laminated with PE 60 gsm			Plain Sheet Int	I321	210X120 cm
			Plain Sheet Small Int	I323	120X75 cm
			Plain Towel Int	I327	60X75 cm
Material: Spun bond NW 40gsm laminated with PE 20gsm			Plain Sheet small NW	E310	150X120 cm
			Plain Sheet NW	E311	210X150 cm
			Plain Towel NW	E313	120X75 cm
Material: SMS Polypropylene Water repellent 50 gsm					

Gowns



Product	Code	Material	Protection level
Half gown	D800	Polyethylene 25micron	----
Half gown	D810	White non Woven 25 gsm	----
Full gown	D802S D802M D802L	Spun lace NW 65-77 gsm	Level 2
Full gown Eco	E812S E812M E812L	NW SMS 50gsm	Level 1
Full gown Eco 35	35E812S 35E812M 35E812L	SMS NW 35 gsm	----
Full gown Eco 25	25E812S 25E812M 25E812L	SMS NW 25 gsm	----
Full gown Viral barrier	D806S D806M D806L	Ahlstorm's BVB fabric	Level 4

- BVB means "Breathable Viral Barrier"
- All non woven fabrics are water repellent
- All full gowns are wrap around gowns and come with 2 nos Hand towels
- Spun lace NW and BVB non woven gowns have bonded sleeves For extra protection, First time in the world.
- All full gown have patented "FLUBA" fluid barrier cuffs for Extra protection



Dressings

Wound Dressings

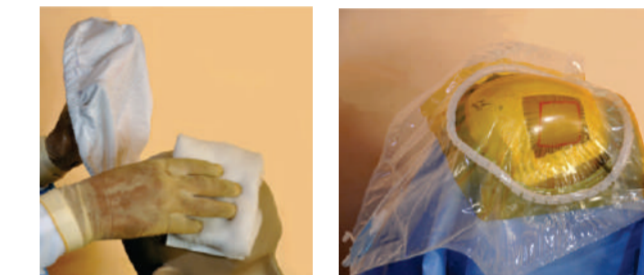
Type	Size	Pad size	code	Pack
<i>G-Dress Comfy</i>	6x5 cm	2x3 cm	GD5	25 nos
	8.5x6.5 cm	3x5 cm	GD10	10 nos
	14x7 cm	3x10 cm	GD15	10 nos
	20x10.5 cm	4x16 cm	GD20	10 nos
	25x10.5 cm	4x21 cm	GD25	10 nos
<i>G-Dress Swimproof</i>	6x5 cm	2x3 cm	GDSP5	25 nos
	8.5x6.5 cm	3x5 cm	GDSP10	10 nos
	14x7 cm	3x10 cm	GDSP15	10 nos
	20x10.5 cm	4x16 cm	GDSP20	10 nos
	25x10.5 cm	4x21 cm	GDSP25	10 nos
<i>G-Dress Flexi</i>	6x5 cm	2x3 cm	GDF5	25 nos
	8.5x6.5 cm	3x5 cm	GDF10	10 nos
	14x7 cm	3x10 cm	GDF15	10 nos
	20x10.5 cm	4x16 cm	GDF20	10 nos
	25x10.5 cm	4x21 cm	GDF25	10 nos
<i>G-Dress Transparent</i>	6x5 cm	2x3 cm	GDT5	25 nos
	8.5x6.5 cm	3x5 cm	GDT10	10 nos
	14x7 cm	3x10 cm	GDT15	10 nos
	20x10.5 cm	4x16 cm	GDT20	10 nos
	25x10.5 cm	4x21 cm	GDT25	10 nos
<i>G-Dress Transparent with Pad</i>	6x5 cm	2x3 cm	GDTP5	25 nos
	8.5x6.5 cm	3x5 cm	GDTP10	10 nos
	14x7 cm	3x10 cm	GDTP15	10 nos
	20x10.5 cm	4x16 cm	GDTP20	10 nos
	25x10.5 cm	4x21 cm	GDTP25	10 nos
<i>IV Dressing Flexi</i>	7x6 cm		IVD	10 nos
	7x6 cm		IVDSP	10 nos
	7x6 cm		IVDT	10nos
<i>G-Dress with super Absorbent Pad</i>	8.5x6.5 cm	3x5 cm	GDSA10	10 nos
	14x7 cm	3x10 cm	GDSA15	10 nos
	20x10.5 cm	4x16 cm	GDSA20	10 nos
	25x10.5 cm	4x21 cm	GDSA25	10 nos
	30x10.5 cm	4x26 cm	GDSA30	10 nos
<i>G-Dress With silver coated Pad</i>	14x7 cm	3x10 cm	GDS15	10 nos
	20x10.5 cm	4x16 cm	GDS20	10 nos
	25x10.5 cm	4x21 cm	GDS25	10 nos
	30x10.5 cm	4x26 cm	GDS30	10 nos



Kraniocap

For dressing head wounds & to hold drapes in place

Kraniocap small KC-S
 Kraniocap medium KC-M
 Kraniocap large KC-L
 Kraniocap extra large KC-XL
 Kraniocap extra small KC-XS



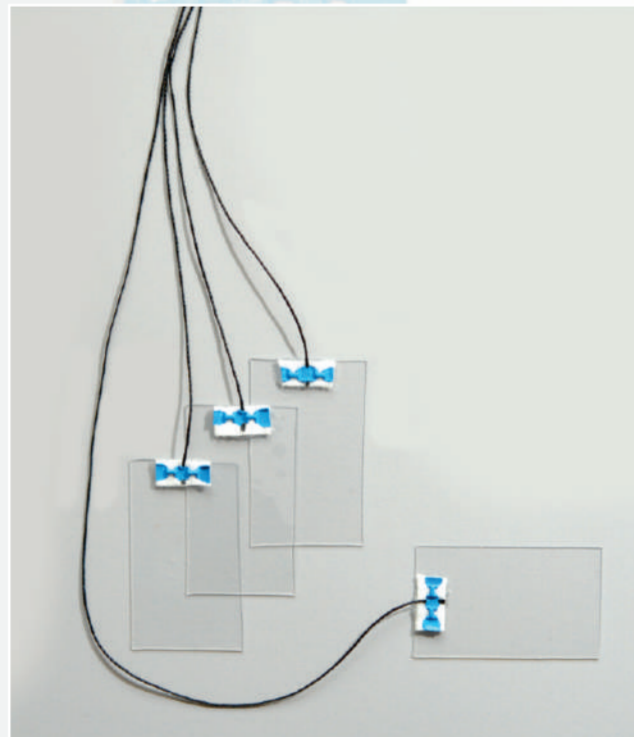
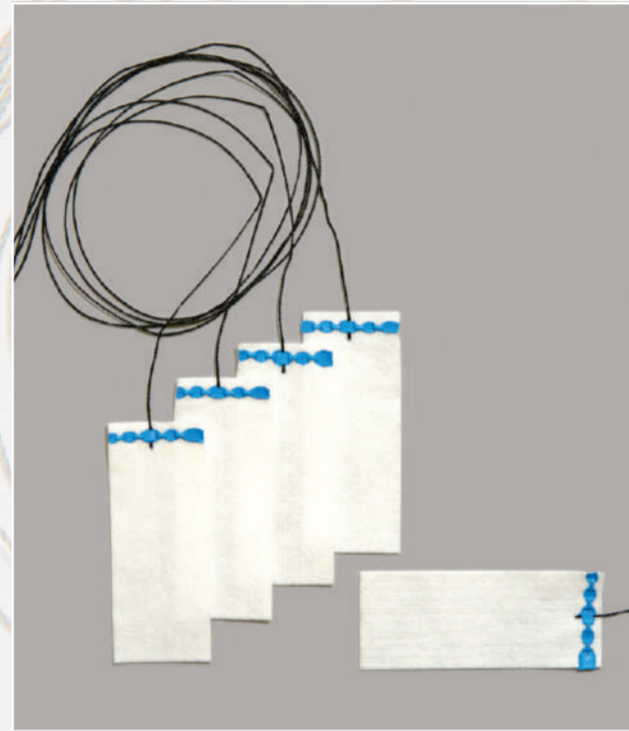
Non Stick Mesh

For covering large wound area in place of gauze. it will prevent sticking of dressing on wound surface

10x15 cm NM1015
 15x25 cm NM1525
 25x30 cm NM2530
 25x50 cm NM2550

DRESSINGS

Patties & Mops



Neurosurgical Patties

Neurosurgical patties are made of viscose non woven fabric with horizontal x-ray opaque line. A black thread is attached for identification

Code no.	Size (WxL)	Number in a pack
Thin patties with X-ray opaque line		
WM0505R	5 x 5 mm	10 patties
WM1010R	10x10 mm	10 patties
WM1015R	10x15 mm	10 patties
WM2020R	20x20 mm	10 patties
WM2030R	20x30 mm	10 patties
WM2040R	20x40 mm	10 patties
WM2050R	20x50 mm	10 patties
WM5070R	50x70 mm	3 patties
WM70100R	70x100 mm	2 patties

Code no.	Size (WxL)	Number in a pack
Thick patties with X-ray opaque line		
TWM0505R	5 x 5 mm	10 patties
TWM1010R	10x10 mm	10 patties
TWM1015R	10x15 mm	10 patties
TWM2020R	20x20 mm	10 patties
TWM2030R	20x30 mm	10 patties
TWM2040R	20x40 mm	10 patties
TWM2050R	20x50 mm	10 patties
TWM5070R	50x70 mm	3 patties
TWM70100R	70x100 mm	2 patties

Silicone patties

Made of silicone sheet. Electric shock proof, heat resistant, non stick & see-through.

Code no.	Size (WxL)	Number in a pack
SP 2030	20 x 35 mm	2 patties
SP4050	40 x 50 mm	2 patties
SP6080	60 x 80 mm	2 patties

"Zero F" Zero fibre Neurosurgical patties

These patties do not shed fibers during use and do not stick with brain surface. Made of polyester microfiber with x-ray opaque line

Code no.	Size (WxL)	Number in a pack
Z0505R	5 x 5 mm	10 patties
Z1010R	10x10 mm	10 patties
Z1015R	10x15 mm	10 patties
Z2020R	20x20 mm	10 patties
Z2030R	20x30 mm	10 patties
Z2040R	20x40 mm	10 patties
Z2050R	20x50 mm	10 patties
Z5070R	50x70 mm	3 patties
Z70100R	70x100 mm	2 patties



Zero-F Mops Zero fiber mops

These mops will not shed any fiber during use. made of polyester microfiber. It will reduce post operative complications

Product Name	Code	Size
Zero-F Mop Extra Large	ZF00	30 x 30 cm
Zero-F Mop large	ZF01	22 x 22 cm
Zero-F Mop Medium	ZF02	22 x 11 cm
Zero-F Mop Small	ZF03	11 x 11 cm

SURGIWEAR®
EN ISO 13485 : 2012 COMPANY

White Mop



PVA foam patties

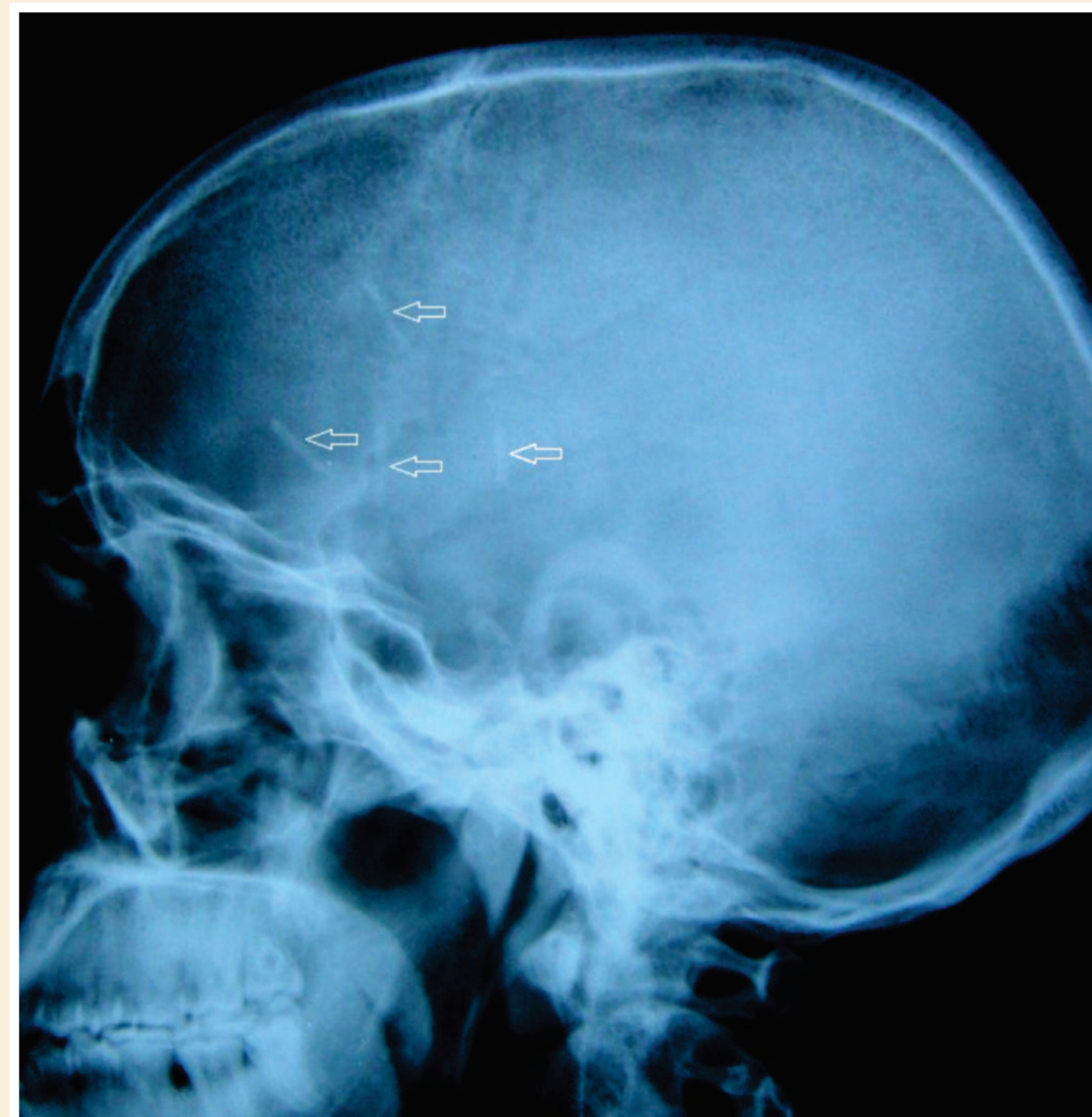
Highly absorbent and fibre free. Will not stick to brain surface and will not leave any fibres on surface.

PVA foam mops

Highly absorbent & fibre free. Very comfortable to use.

Material : Non woven spun lace perforated cotton/viscose of approx 40 gsm

Product Name	Code	Size
White Mop Extra Large	WM101	5 x 30 cm
White Mop Large	WM102	30 x 20 cm
White Mop Extra Large	WM103	25 x 17 cm
White Mop Medium	WM104	20 x 15 cm
White Mop Small	WM105	15 x 12 cm
White Mop Patch	WM106	12 x 10 cm
White Mop Stripe	WM107	4 x 15 cm
General Surgery Set Large	WM001	
General Surgery Set Medium	WM002	
General Surgery Set Small	WM003	
Neuro Surgery Set Large	WM011	
Neuro Surgery Set Small	WM012	



Radio-opaque patties visible in X-Ray

Cranial Flap Closing Devices

Calvariofix™

Extremely time saving
You should be able to
close cranial flap in
less than 2 minutes

- * It can resist an inward push of more than 20 kg
- * Reopening of cranial flap is easy & very fast & without any special tools
- * It can be reused in same patient as well as other patient.
- * In case of brain edema un-screwed flap can come out and will act as safety valve.



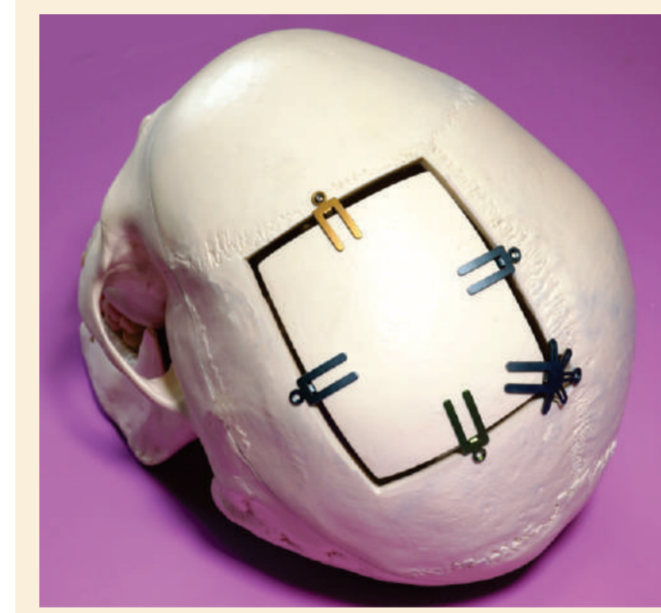
Top view



Bottom view



Side view



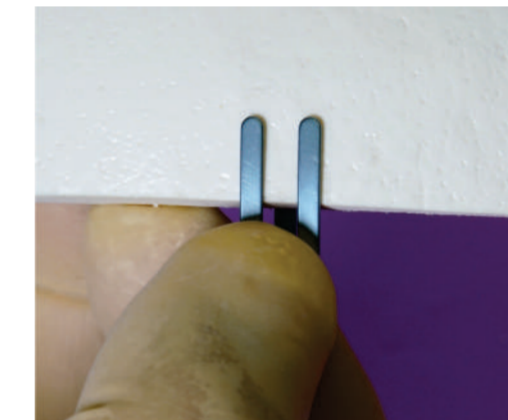
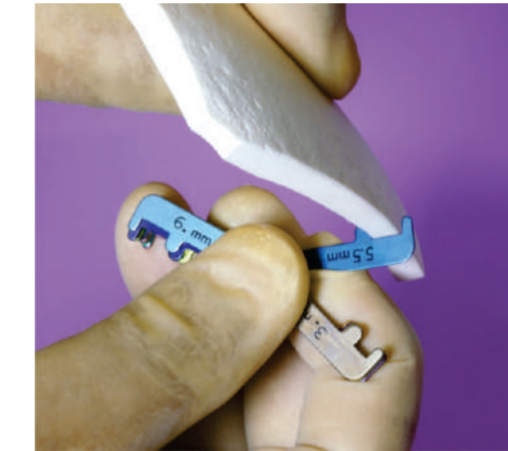
Instructions for use of CALVARIOFIX™

*No special tools are required. Only skull thickness measuring tool SKULL GAUGE is required. It is supplied with the tray.

Calvariofix is very easy to use.



1. Measure the thickness of bone flap with the help of skull gauge where you wish to apply it.



2. select proper size of calvariofix from the tray. Apply it on the flap as shown. Similarly measure and apply on all four sides.



3. Place the cranial flap on the cranium. Apply screws.
In case you expect brain edema, don't use screws and leave the flap without fixing it.

To open cranial flap during re-operation / reentry just remove the screws and flap can be reopened in a very short time.

SURGIWEAR®
EN ISO 13485 : 2012 COMPANY

CALVARIOFIX is available in following sizes

Sizes are based upon thickness of cranial flap at the application point:

3mm	CFIX030	3.5mm	CFIX035	4mm	CFIX040
4.5mm	CFIX045	5mm	CFIX050	5.5mm	CFIX055
6mm	CFIX060	6.5mm	CFIX065	7mm	CFIX070
7.5mm	CFIX075	8mm	CFIX080	8.5mm	CFIX085
9mm	CFIX090	9.5mm	CFIX095	10mm	CFIX100
10.5mm	CFIX105	11mm	CFIX110	11.5mm	CFIX115
12mm	CFIX120				

Skull Gauge SG01

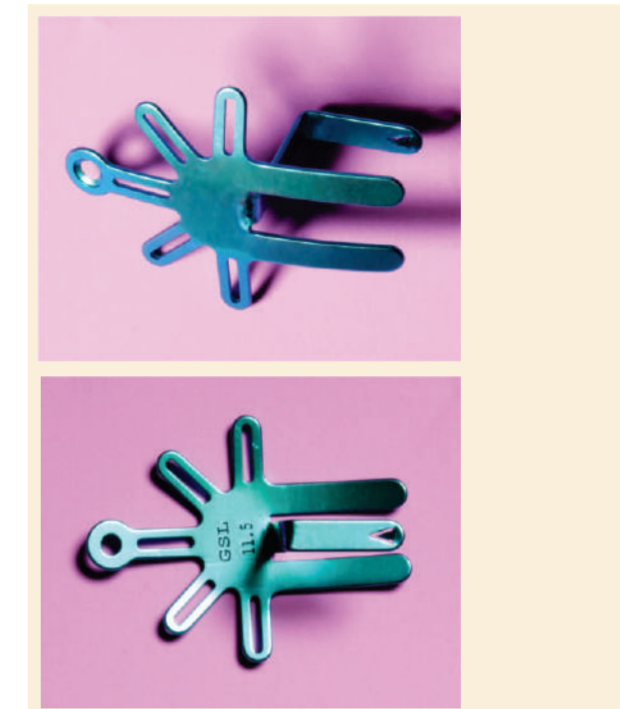
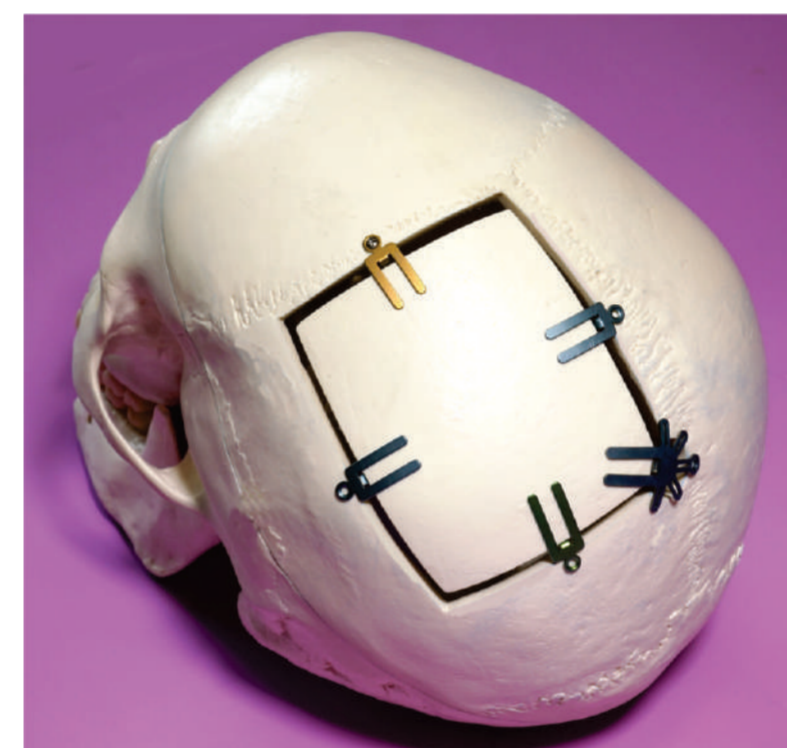


CALVARIOFIX sterilization tray CFTR-CAL



Octofix

Octofix will cover the burr hole while closing the cranial flap. This will provide additional anchorage as well as covering the burr hole gap.



Octofix is easy to use.

1. Measure the thickness of bone flap with the help of skull gauge where you wish to apply it.
2. select proper size of Octofix from the tray.
3. Apply it on the flap as shown.
4. Place the cranial flap on the cranium.
5. Apply screws.
6. In case you expect brain edema, don't use screws and leave the flap without applying screws.

To open cranial flap during re-operation reentry just remove the screws and flap can be reopened in a very short time.

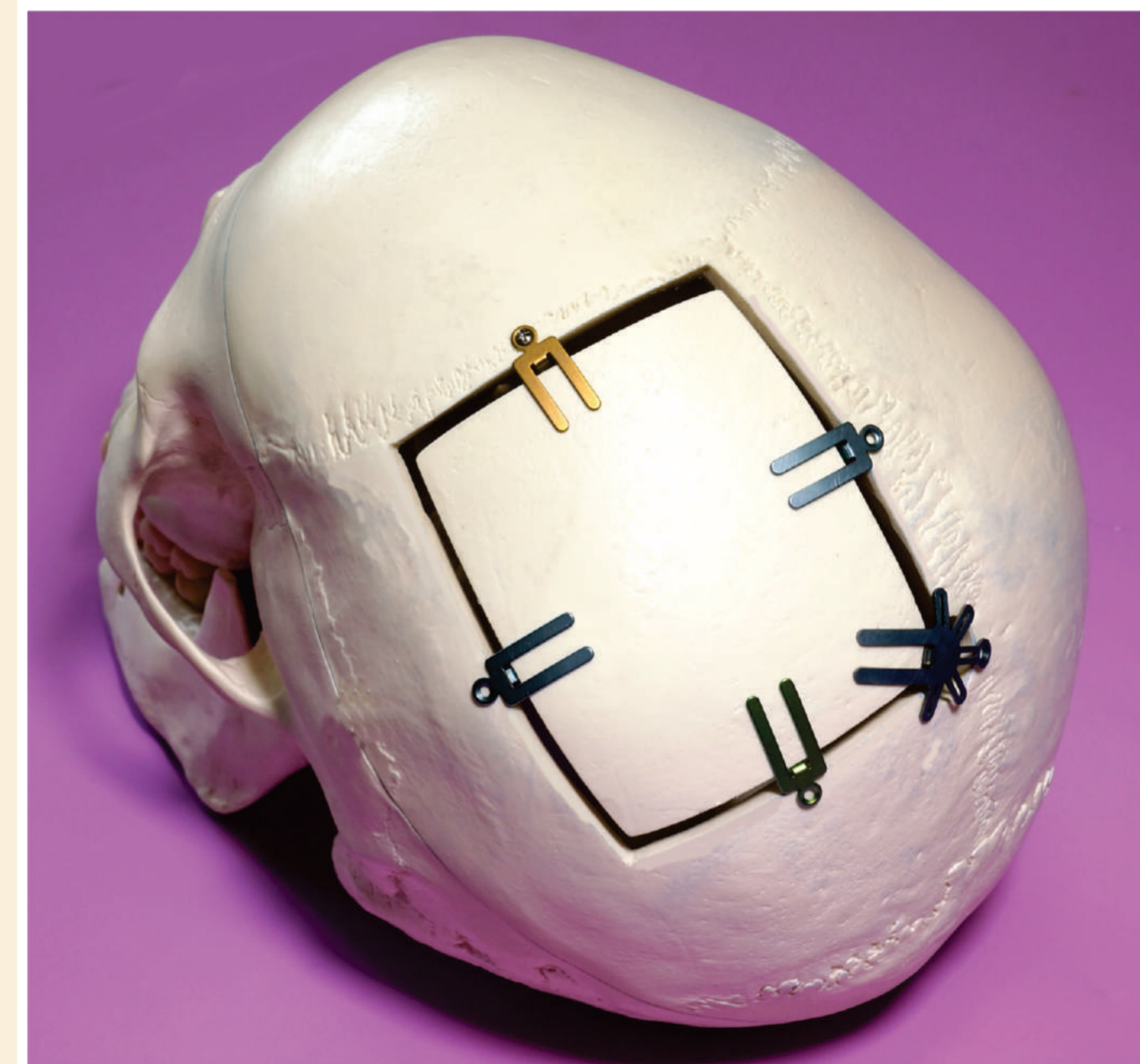
SURGIWEAR
EN ISO 13485 : 2012 COMPANY

Following sizes are available

Sizes are based upon thickness of cranial flap at the application point:

3mm	OFIX030	3.5mm	OFIX035	4mm	OFIX040
4.5mm	OFIX045	5mm	OFIX050	5.5mm	OFIX055
6mm	OFIX060	6.5mm	OFIX065	7mm	OFIX070
7.5mm	OFIX075	8mm	OFIX080	8.5mm	OFIX085
9mm	OFIX090	9.5mm	OFIX095	10mm	OFIX100
10.5mm	OFIX105	11mm	OFIX110	11.5mm	OFIX115
12mm	OFIX120				

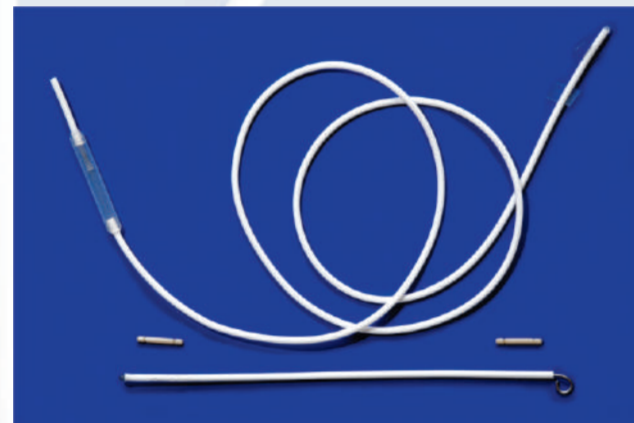
Octofix sterilization tray CFTR-OCT



Chhabra 'Slit n Spring' Hydrocephalus Shunt System



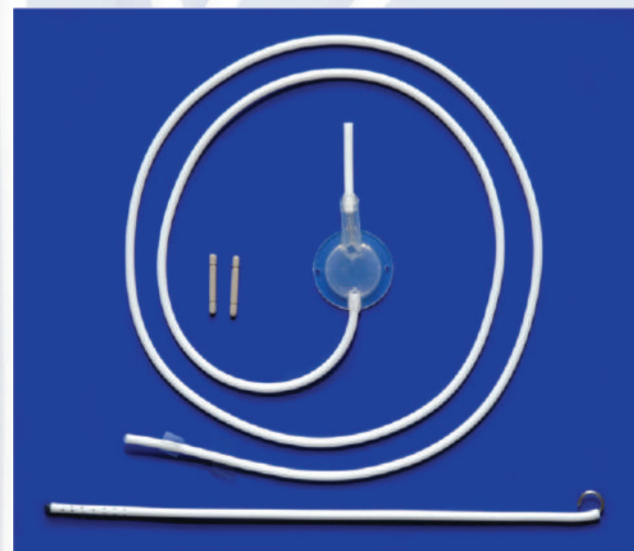
Endorsed by WFNS



The model with a larger distal catheter (75 cm) is labeled as VP and the model with smaller distal catheter (30 cm) is labeled as VA. The following six models are available.

Suffix BR means Shunt with bacterial resistant tubing

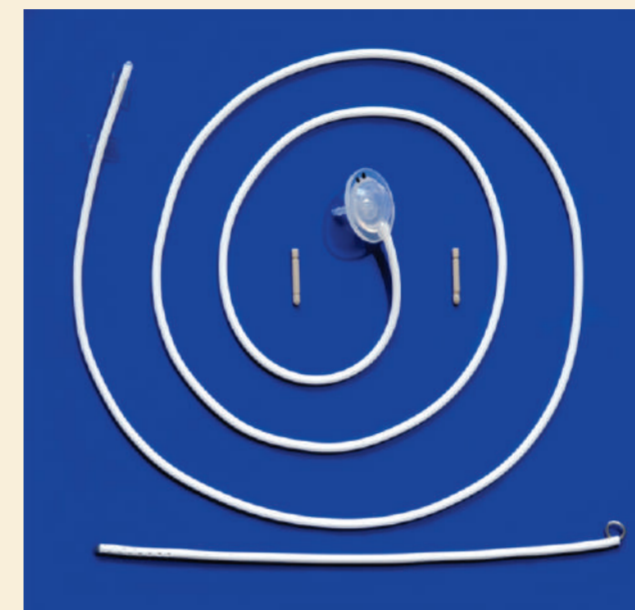
Description of type	Code No.
Ventriculo Peritoneal High Pressure with Regular Reservoir VPHP	SH201 SH201BR
Ventriculo Peritoneal Medium Pressure with Regular Reservoir VPMP	SH202 SH202BR
Ventriculo Peritoneal Low Pressure with Regular Reservoir VPLP	SH203 SH203BR
Ventriculo Peritoneal High Pressure with Large Flushing Reservoir VPHP	SH231 SH231BR
Ventriculo Peritoneal Medium Pressure with Large Flushing Reservoir VPMP	SH232 SH232BR
Ventriculo Peritoneal Low Pressure with Large Flushing Reservoir VPLP	SH233 SH233BR
Ventriculo Artrial High Pressure with Regular Flushing Reservoir VAHP	SH204 SH204BR
Ventriculo Artrial Medium Pressure with Regular Flushing Reservoir VAMP	SH205 SH205BR
Ventriculo Artrial Low Pressure with Regular Flushing Reservoir VALP	SH206 SH206BR



The system is supplied complete with a ventricular catheter 15 cm long, a unitized shunt assembly with a distal catheter and two straight connectors in peel-open packs. The pack is sterilized by EO.

World's most preferred shunt

GSL "Dome Valve" Hydrocephalus Shunt System

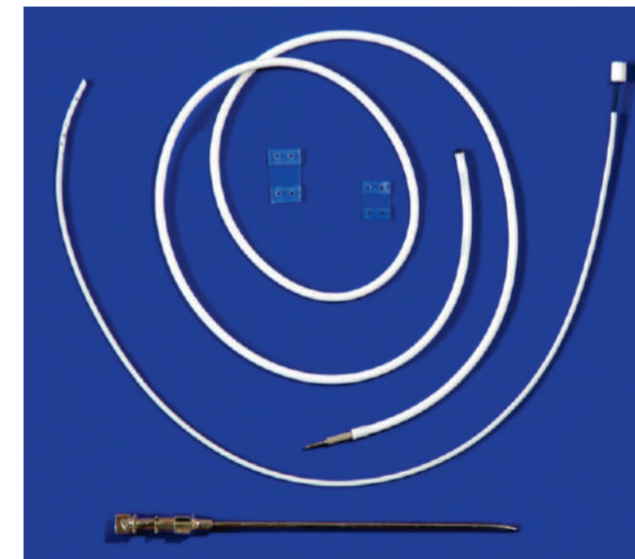


Description	Code no
High Pressure	SH601 SH601BR
Medium Pressure	SH602 SH602BR
Low Pressure	SH603 SH603BR

Each system is supplied complete with one unitized GSL "Dome Valve" reservoir with 90 cm radio-opaque distal part, one 15 cm ventricular part and two straight connectors. The system is sterilized by Ethylene Oxide gas and packed in double peel open packaging.

Suffix BR means Shunt with bacterial resistant tubing

Chhabra Lumbar Peritoneal Shunt System Theco-peritoneal Shunt



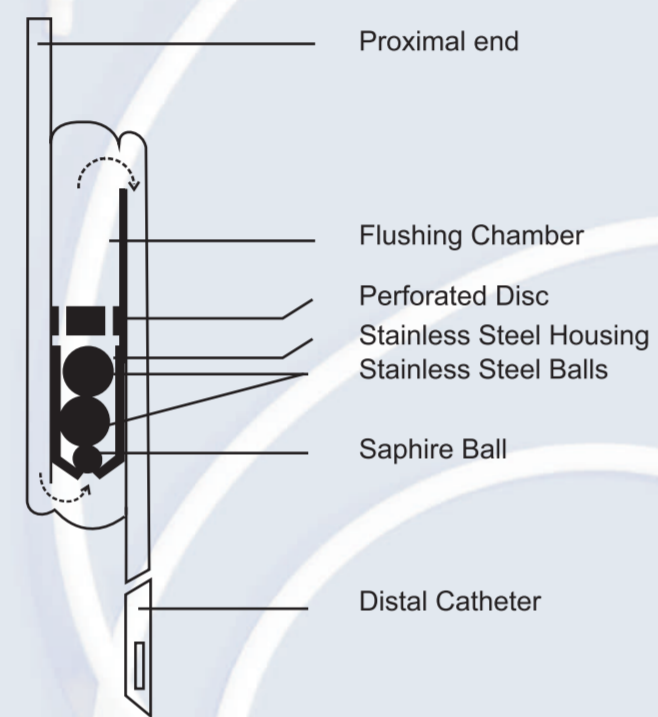
Chhabra Lumbar Peritoneal Shunt System SH301

Each system is supplied complete with one lumbar catheter 40 cm long, One peritoneal catheter 60 cm long, one special lumbar catheter connectors, two suture collar & one 14 gauge thin wall Touhey needle
The system is sterilized by Ethylene Oxide gas and packed in double peel open packaging.

HYDROCEPHALOUS SHUNT SYSTEMS

SURGIWEAR
EN ISO 13485 : 2012 COMPANY

"Z" Flow Hydrocephalous Shunt System



Distance in cm between vertex and 2nd or 6th intercostal space	Type of system according to number of large balls in the housing	Code No.
(a) for infants and children upto two years	Two-ball system	SH101 SH101BR
(b) upto 38 cm	Two-ball system	SH101 SH101BR
(c) 39 to 47 cm	Three-ball system	SH102 SH102BR
(d) 48 cm onwards	Four-ball system	SH103 SH103BR

Each system is supplied complete with one unitized catheter 100 cm long (one end is ventricular catheter & other end is distal catheter), one "Z"Flow Valve reservoir and two straight connectors. The system is sterilized by Ethylene Oxide gas and packed in double peel open packaging.

Hydrocephalous Shunt parts & accessories



Chhabra "Slit n Spring" Valve

High Pressure SH211
Medium Pressure SH212
High Pressure SH213



Chhabra "Slit N Spring" Valve with Large Flushing reservoir

High Pressure SH221
Medium Pressure SH222
High Pressure SH223



Anti-Siphon / Anti- Gravity Valve Chhabra "Z" Flow Valve

Two Ball System SH111
Three Ball System SH112
For Ball System SH113



Distal Catheter

90 cm long ID1.3 mm OD 2.5 mm
radio-opaque with four slits SH001 & SH001BR



Uni-Shunt / Uni Catheter

90 cm long proximal end ventricular catheter & distal peritoneal end with four slits
High Pressure SH401 SH401BR
Medium Pressure SH402 SH402BR
Low Pressure SH403 SH403BR



Ventricular catheter

15 cm long ID 1.3 mm OD 2.5mm SH002 SH002BR

15 cm long ID 1.3 mm OD 2.5mm bent at Right angle 5cm ventricular end SH002R5

15 cm long ID 1.3 mm OD 2.5mm bent at Right angle 7cm ventricular end SH002R7

30 cm 1.3mm x 2.5 mm (7.5F) SH002B SH002BBR

30 cm 1.5 mm x 3.5 mm (10.5F) SH002C SH002CBR



Anti Chamber

for injection SH008

Hydrocephalous Shunt parts & accessories



Straight Connector SH003



Suture collar SH007



Right angle connector SH004



Y connector with extra long ventricular catheter SH006



Straight Connector SH005



Cerebral catheter reservoir reservoir chamber for injections with 15 cm long ventricular catheter

Small 12 mm diameter chamber SH011
Large 18 mm diameter chamber SH012



Instruments for shunt implantation
Ventricular catheter passer INS03

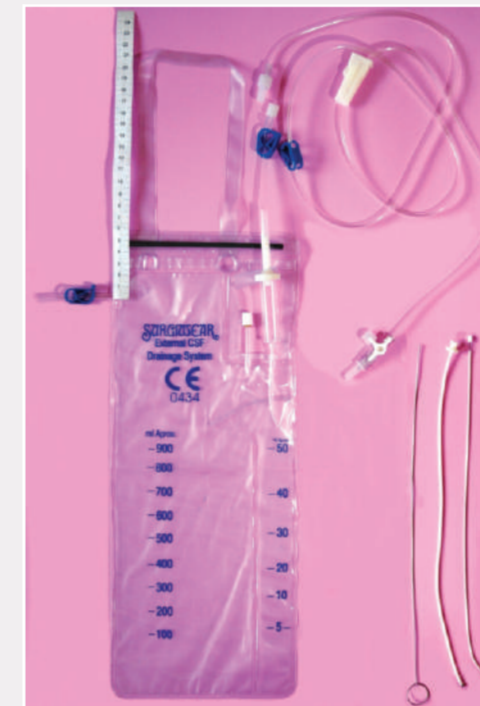


Sub cutaneous catheter passer
Small 35 cm INS01
Large 60 cm INS02



Peritoneal split trocar INS04

External CSF Drainage systems



Ventricular External CSF Drainage System SH024
Contains one bag, one 30 cm ventricular catheter with stylet, connector, trocar, catheter anchoring collar and connecting tube



Lumbar External CSF Drainage System SH025
Contains one bag, one 30 cm lumbar catheter with 14G Touhey needle connector, suture collar & connecting tube

External CSF Drainage Bag SH021

Bag with connecting tube

CEFLUI Ventricular External CSF Drainage System SH034
Contains one double chamber bag, bag anchoring panel, one 30 cm ID 1.5 OD 3.0 mm ventricular catheter with stylet, connector, trocar, catheter anchoring collar and connecting tube

CEFLUI Lumbar External CSF Drainage System SH035

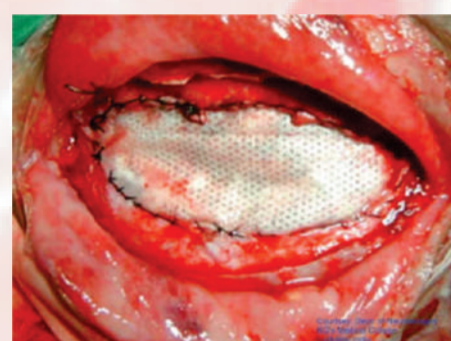
Contains one double chamber bag, bag anchoring panel, one 30 cm lumbar catheter with 14G Touhey needle, connector, suture collar & connecting tube

CEFLUI External CSF Drainage Bag SH031

Bag with double chamber with connecting tube

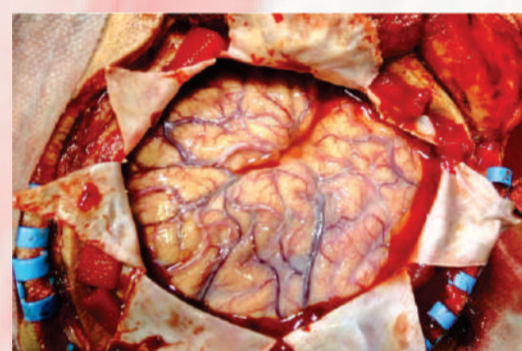
SURGIWEAR
EN ISO 13485 : 2012 COMPANY

G-Patch Dura Repair patch

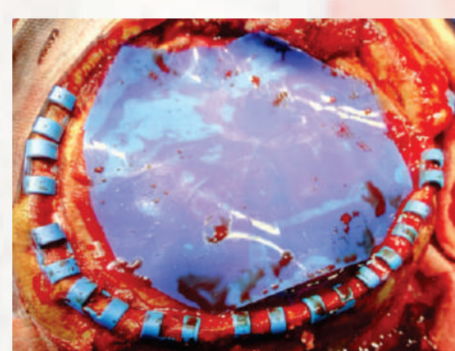


G-Patch- Non absorbable
made of Poly propylene non woven
Small 8 x 10 cm GP01
Medium 10 x 12 cm GP02
Large 15 x 20 cm Gp03

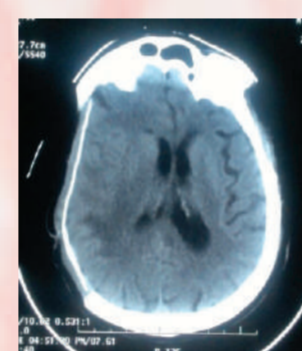
G-Patch-2- Absorbable
Made of PLA (poly lactic acid) Nano fibers
Small 8 x 10 cm GP01-2
Medium 10 x 12 cm GP02-2
Large 15 x 20 cm GP03-2



Per operative dura opened



Application of CEREFILM perforated silicone film



Post op CT



Reoperation of same area easy to dissect plane

G-Patch-3
Stretchable silicone sheet- CEREFILM

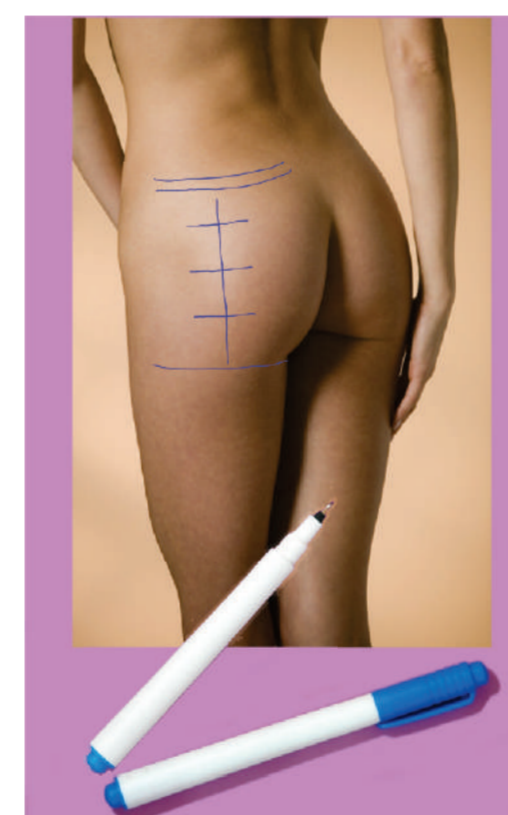
Used to keep different layers separate after decompressive craniectomy.

Small 8 x 10 cm GP01-3
Medium 10 x 12 cm GP02-3
Large 15 x 20 cm GP03-3

Sponge stick

With the help of sponge stick antiseptics and other part preparation agents can be applied easily and faster. The sponge has wide area for faster application. It can hold larger amount of antiseptic for wider application.

The "Sponge Stick" is available in one size.
SPONGE STICK Code No. SS01
Stick 17 cm long
Sponge 5 x 5 x 2.5 cm.
Each sponge stick is packed in peel open pouches individually sterilized by ETO.



Dermimarker

During any surgery skin & parts are required to be marked. Surgiwear presents a very convenient solution DERMIMARKER. It is a skin marking pen. Dermimarker is supplied sterile packed in peel open pouches with a flexible scale.

Dermimarker-1 (thin marking) INS071
Dermimarker-2 (thick marking) INS072

SURGIWEAR
EN ISO 13485 : 2012 COMPANY

Craniomapper (axial)

For Marking & Localizing organs on skin surface after CT scan

For many procedures such as surgical & radiotherapy, localising & marking location of different organs on skin is very important. CAT scan gives a cut section view of organs but it is difficult to mark location of lesions on skin after CT scan. Craniomapper developed by SURGIWEAR will help in localizing & marking lesions visible on CAT scan. When used carefully lesions can be marked on skin with accuracy of +/-5mm

To see animation video visit vimeo.com/108316262



To know the vertical level of lesion:

New Design of Craniomapper uses radio-opaque alphabets. Most of these are hollow. These alphabets cast shadow in CT scan. You can read ABCD.... Same is also printed on Craniomapper. As per CT scan alphabet, one can identify horizontal level of lesion.

Alphabets



To know the circumferential position of lesion

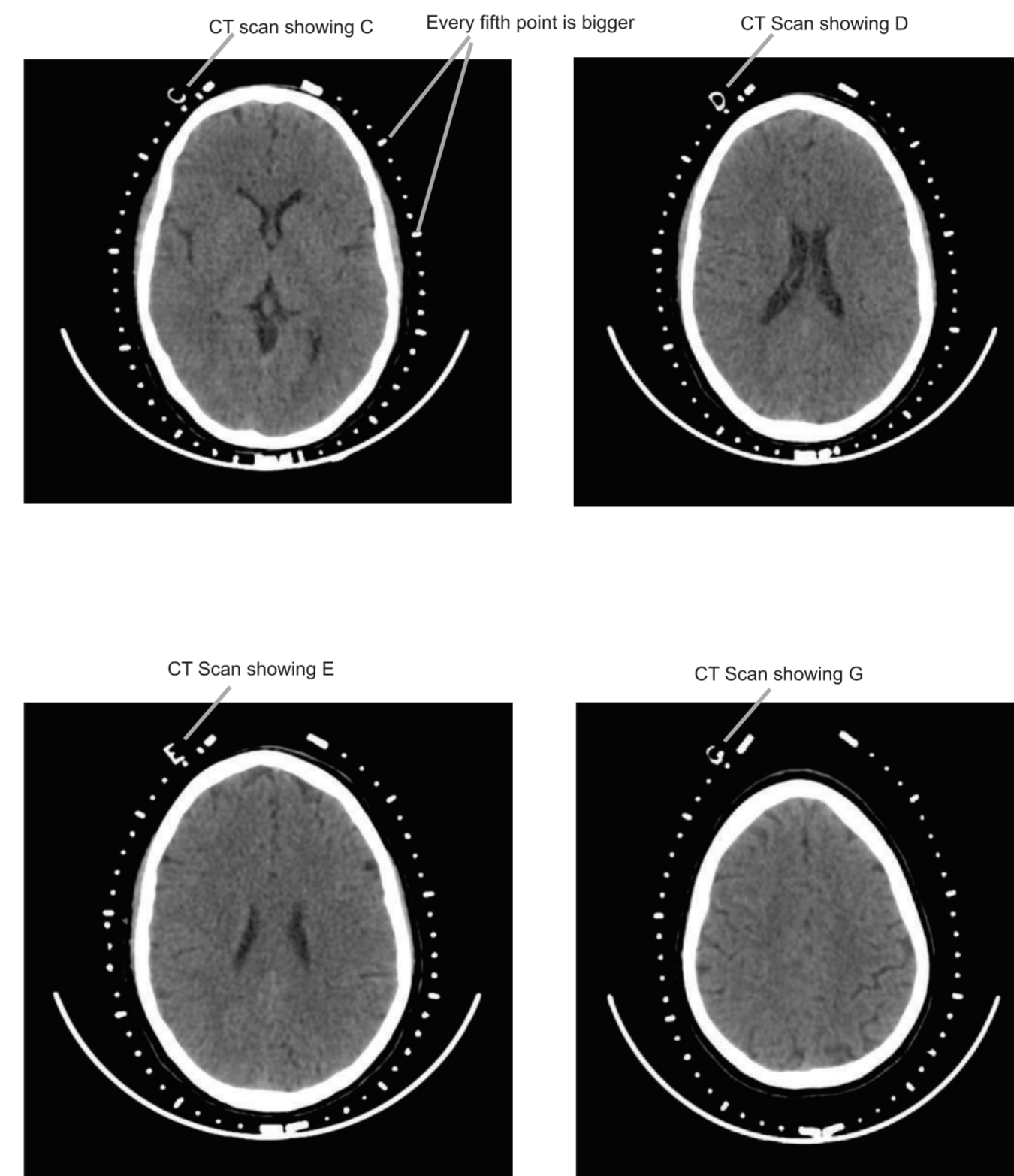
There are vertical lines in Craniomapper at each 1 cm. Each 5 cm has a thicker line. These lines are visible on CT scan as dots. By counting these dots, one can identify circumferential position of lesion.

Crossing point of two position/lines is the location of lesion.

Instruction for use

- Apply on head as shown in picture.
- Front level should be at the level of orbital ceiling at middle it should touch base of ear.
- On the front both flaps should be equal.
- To be more accurate, mark position of Craniomapper with skin marking pen.

CTScan of patient with CRANIOMAPPER



CRANIOMAPPER

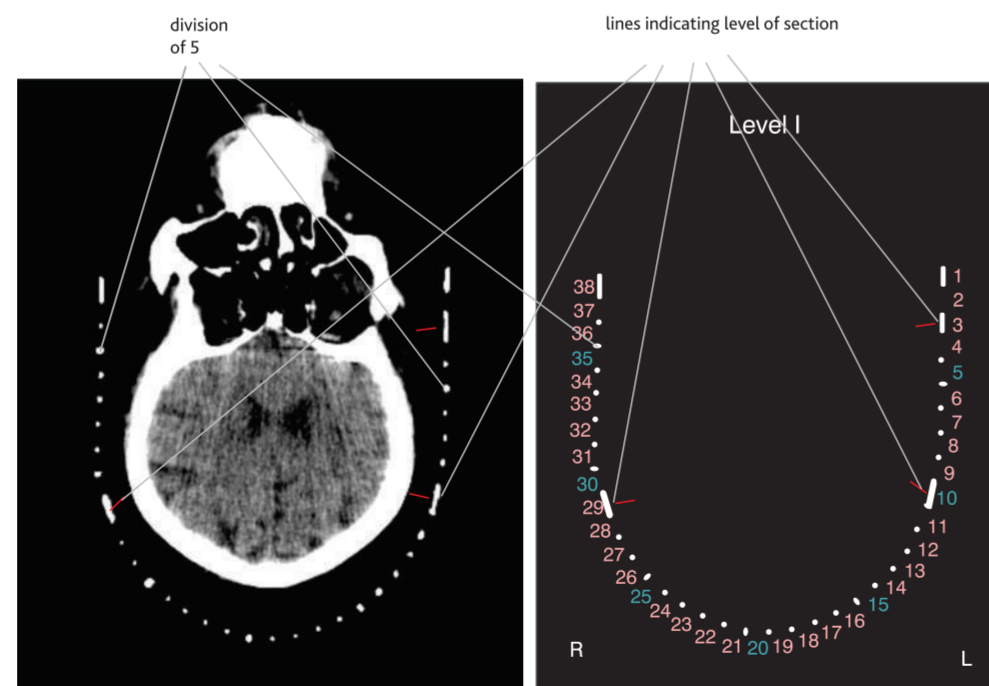
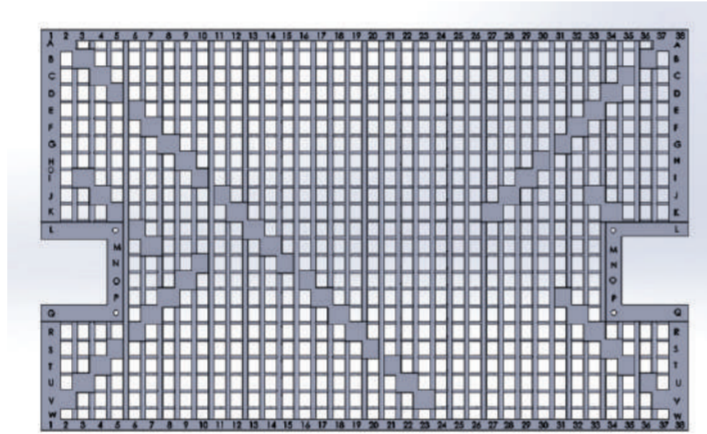
Craniomapper Coronal



For Marking & Localizing organs on skin surface after CT scan

For many procedures such as surgical & radiotherapy, localising & marking location of different organs on skin is very important. CAT scan gives a cut section view of organs but it is difficult to mark location of organs on skin after CT scan. Craniomapper developed by SURGIWEAR will help in localizing & marking organs visible on CAT scan.

Craniomapper coronal will help marking lesions / anatomy of vertex region, when CT is done in coronal plane



CAT scan with Craniomapper coronal.



EASYSREW

Cranial Fixation System

Cranial Fixation System

1. Two hole straight Plates



a. 12mm CF01-12 b. 15mm CF01-15 c. 20mm CF01-20

2. Three hole Y plate



a. 15mm CF2-15 b. 20mm CF2-20

3. Four hole square plate



a. 13 x 13 mm hollow CF3-13H b. 13 x 13 mm filled CF3-13F

4. Burr hole cover



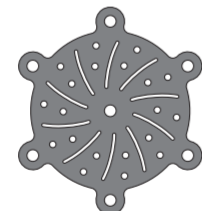
a. Two hole burr hole cover 18 x 10 mm CF4-2



b. Five hole burr hole cover for 13 mm burr hole CF4-13



c. Six hole burr hole cover for 18 mm burr hole CF4-18



d. Six hole burr hole cover for 24 mm burr hole bent CF4-24



e. Flexible burr hole cover dia 16mm CF4-F16



f. Flexible burr hole cover dia 16mm CF4-F24



g. Flexible burr hole cover dia 16mm CF4-F26



h. Flexible burr hole cover dia 16mm CF4-F28

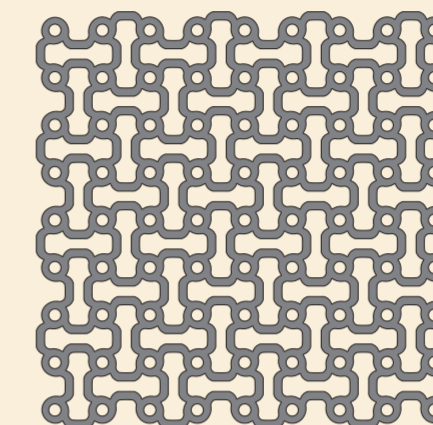
6. Multi Hole straight plates



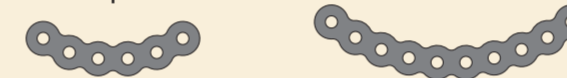
a. 20mm CF6-20 b. 30mm CF6-30 c. 67mm CF6-69

5. Cranial Mesh

- a. 40 x 40 mm CF5-44
- b. 60 x 60 mm CF5-66
- c. 60 x 80 mm CF5-68
- d. 100 x 100 mm CF5-1010
- e. 120 x 120 mm CF5-1212
- f. 120 x 150 mm CF5-1215
- g. 120 x 180 mm CF5-1218



7. Curved plate



a. 25mm 6 hole CF7-25 b. 40 mm 10 hole CF7-40

8. X shaped plate



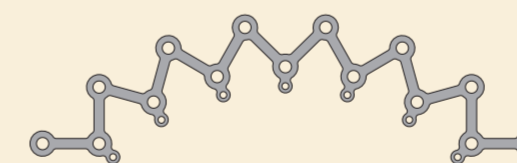
a. 16mm 4 hole CF8-16 b. 18mm 6 hole CF8-18 c. 20 mm 6 hole CF8-20

9. L shaped plate



a. 21 x 13mm CF9-21

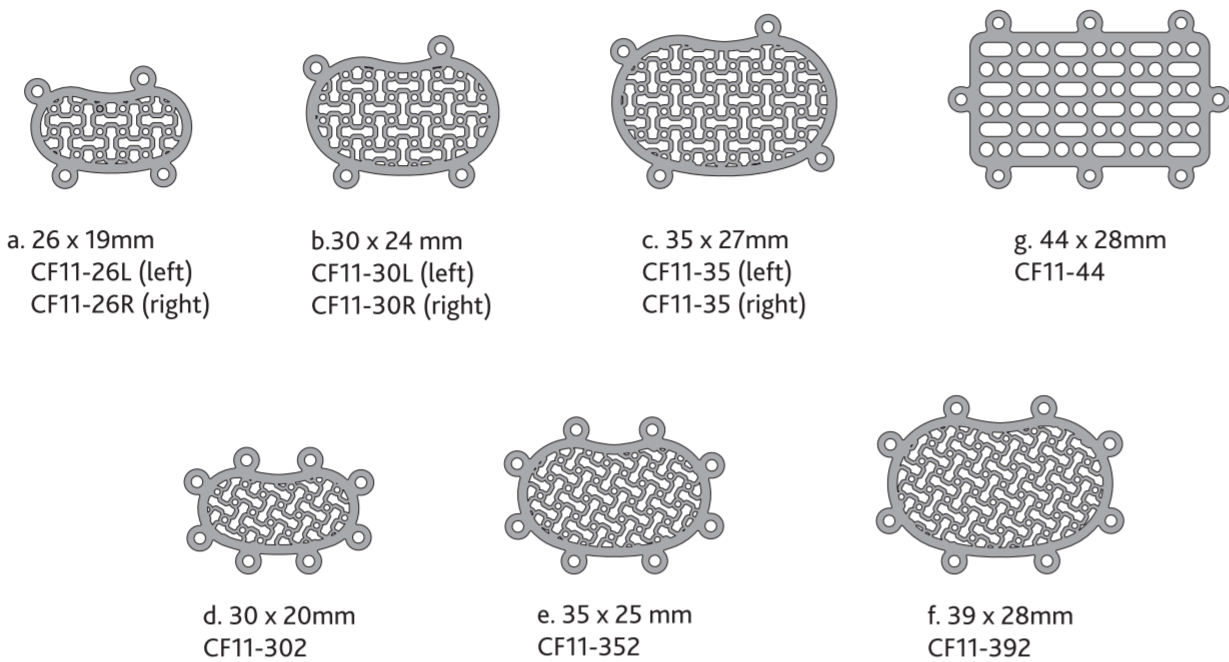
10. Temporalis muscle attachment plate (reconstruction in temporal region)



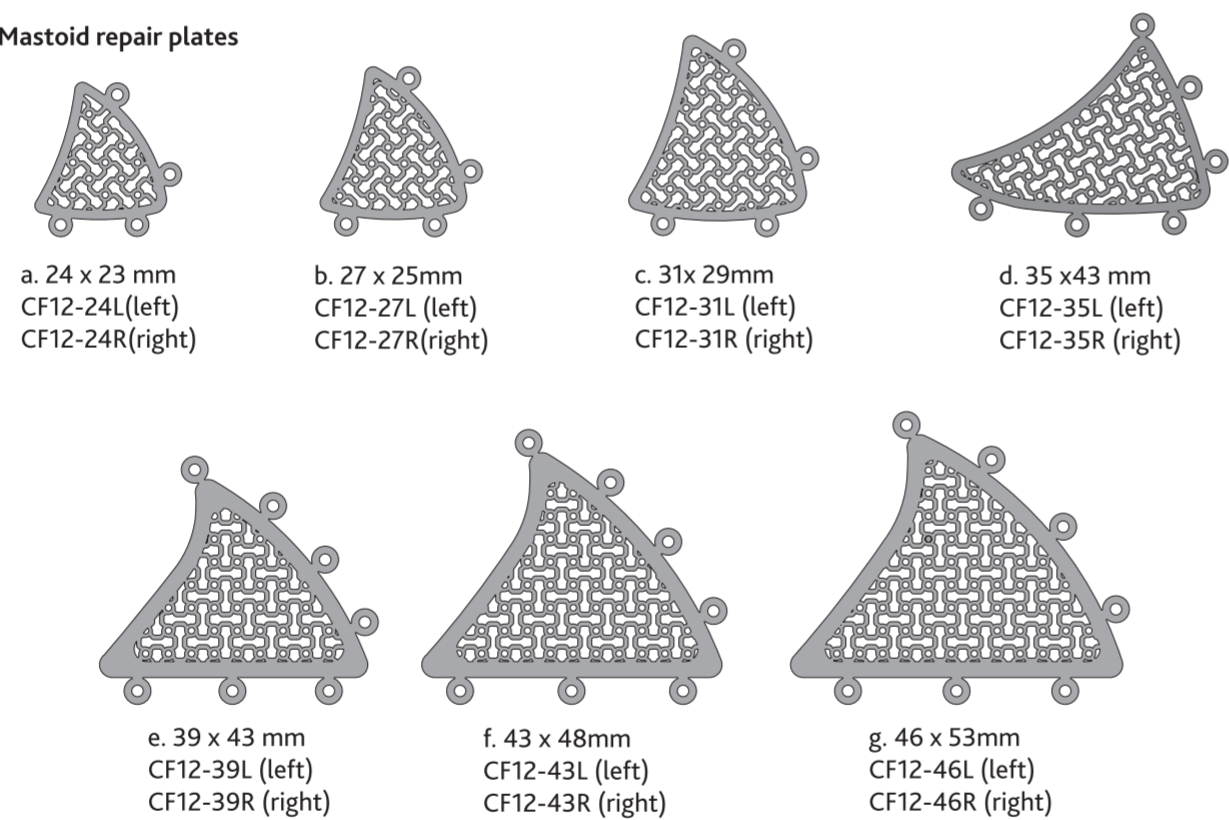
a. 75 x 16mm
CF10-75

CRANIAL FIXATION SYSTEM

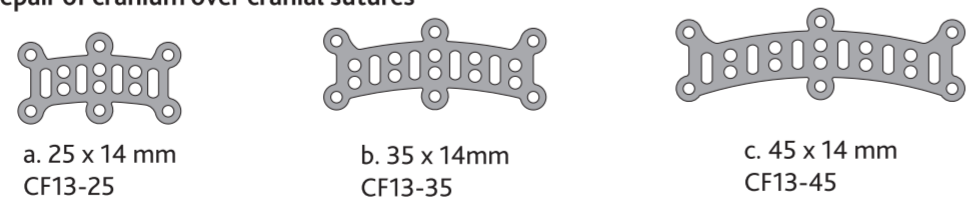
11. Temporal bone / area repair plates



12. Mastoid repair plates



13. Plates for repair of cranium over cranial sutures

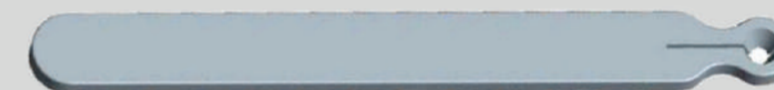


15. Self tapping screws supplied sterile with screw holder

- a. 1.6 x 3mm CF15-3
- b. 1.6 x 4mm CF15-4
- c. 1.6 x 5mm CF15-5



16. Screw holder comes with each screw.
Available separately in packs of 3 pre-sterilized
a. Screw holder CFSH-3



17. Screw driver handle
a. Screw driver handle CFSDH-1



18. Screw driver bit
a. Screw driver cross bit CFSDB-1



Instruments for Cranial Fixation System



Mesh cutter Large CFI-01



Mesh Shaper CFI-03



Multi functional mesh pliers CFI-04



Screw Forceps CFI-02



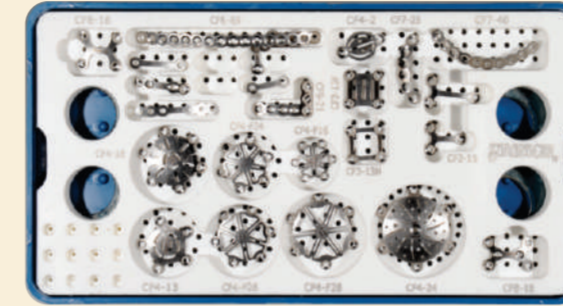
Plate Holding pliers CFI-05



0.2mm plate cutter CFI-06

Sterilization Boxes & Trays for Cranial Fixation system & Instrument

SURGIWEAR
EN ISO 13485 : 2012 COMPANY

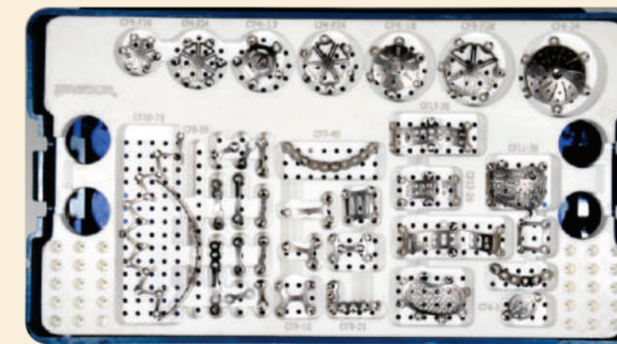


Small sterilization box with small tray
CFTR-SS
This Box with tray is suitable for commonly used cranial fixation plates

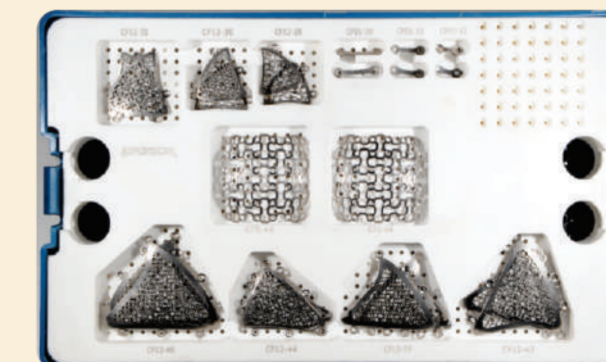


Medium two tier sterilization box with medium tray and bottom silicone mat
CFTR-MM
This box with medium tray is suitable for commonly used plates and instrument. Four instruments can be placed in the bottom on silicone mat

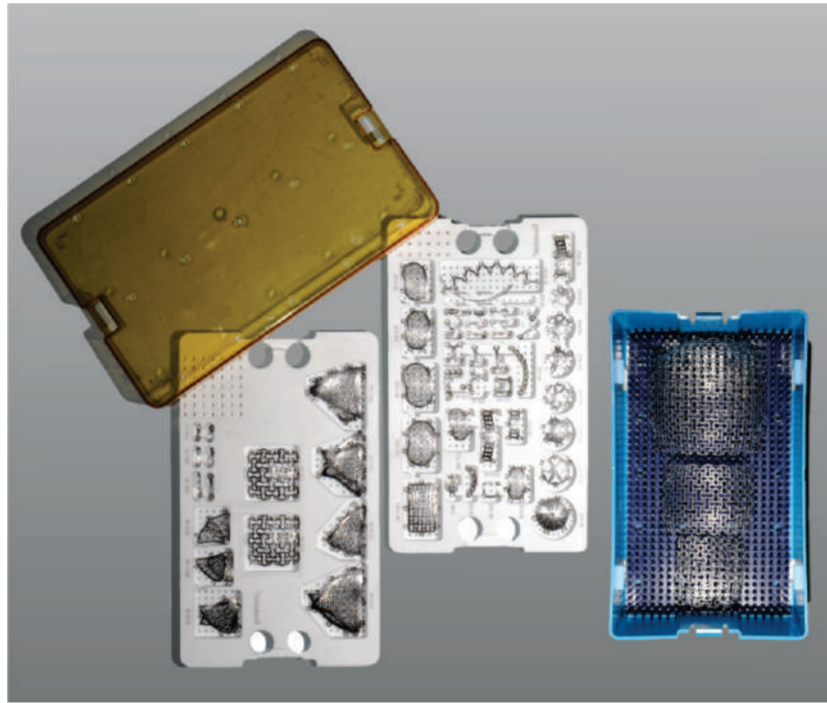
Medium Box only: CFTR-M
This box comes with one silicone mat to hold instruments



Large box with large tray A: CFTR-LA
It is used to keep commonly used plates & screws

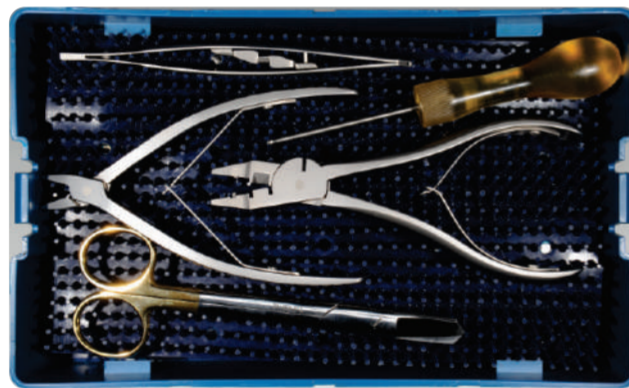


Large box with large tray B: CFTR-LB
It is used to keep small mesh, mastoid plates & screws



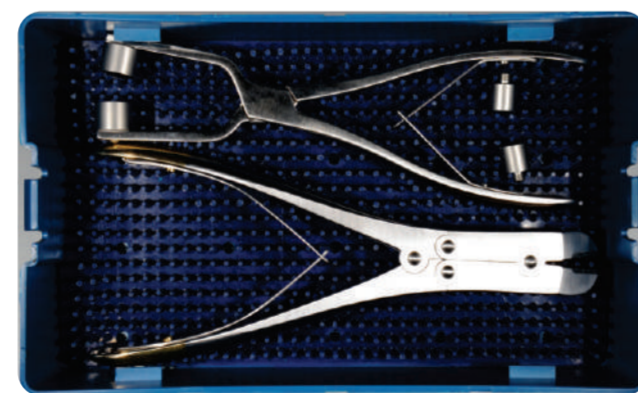
**Large box with three tier storage. Large tray type A
Large tray type B & bottom
silicone mat: CFTR-LAB**

This box can be used for sterilization of all most all types of plates and small & medium mesh plates.



Large Instrument Box: CFTR-L

This box comes with two silicone mats. Most of the instruments of cranial fixation system can be sterilized in this box.



**Plate screw sets
Pre-sterilized ready to use**

Two Hole Straight Plate Set
1plate+2screwCFS 01-12-4
1plate+2screwCFS 01-12-5
1plate+2screwCFS 01-15-4
1plate+2screwCFS 01-15-5
1plate+2screwCFS 01-20-4
1plate+2screwCFS 01-20-5

0.3 mm thick plates
1plate+2screw03CFS 01-12-4
1plate+2screw03CFS 01-12-5
1plate+2screw03CFS 01-15-4
1plate+2screw03CFS 01-15-5
1plate+2screw03CFS 01-20-4
1plate+2screw03CFS 01-20-5

Three Hole Y Plate Set
1plate+3screwCFS2-15-4
1plate+3screwCFS2-15-5
1plate+3screwCFS2-20-4
1plate+3screwCFS2-20-5
0.3 mm thick plates
1plate+3screw03CFS2-15-4
1plate+3screw03CFS2-15-5
1plate+3screw03CFS2-20-4
1plate+3screw03CFS2-20-5

Four Hole Square Plate Set
1plate+4screwCFS3-13H-4
1plate+4screwCFS3-13H-5
1plate+4screwCFS3-13F-4
1plate+4screwCFS3-13F-5
0.3 mm thick plates
1plate+4screw03CFS3-13H-4
1plate+4screw03CFS3-13H-5
1plate+4screw03CFS3-13F-4
1plate+4screw03CFS3-13F-5

Burr Hole Cover Set
1plate+2screwCFS4-2-4
1plate+2screwCFS4-2-5
1plate+5screwCFS4-13-4
1plate+5screwCFS4-13-5
1plate+6ScrewCFS4-F16-4
1plate+6ScrewCFS4-F16-5
1plate+6ScrewCFS4-F24-4
1plate+6ScrewCFS4-F24-5
1plate+6ScrewCFS4-F26-4
1plate+6ScrewCFS4-F26-5
1plate+6ScrewCFS4-F28-4
1plate+6ScrewCFS4-F28-5

0.3 mm thick plates
1plate+2screw03CFS4-2-4
1plate+2screw03CFS4-2-5
1plate+5screw03CFS4-13-4
1plate+5screw03CFS4-13-5
1Plate+6Screw03CFS4-F16-4
1Plate+6Screw03CFS4-F16-5
1Plate+6Screw03CFS4-F24-4
1Plate+6Screw03CFS4-F24-5
1Plate+6Screw03CFS4-F26-4
1Plate+6Screw03CFS4-F26-5
1Plate+6Screw03CFS4-F28-4
1Plate+6Screw03CFS4-F28-5

X Shaped Plate Set
1plate+4screwCFS8-16-4
1plate+4screwCFS8-16-5
1Plate+6ScrewCFS8-18-4

Raney Clip

SURGIWEAR
EN ISO 13485 : 2012 COMPANY

Raney clip is used for application on edge of cranial skin during all kind of surgery on the head. Skin of head & face has very good vascularity. Further the skin of head is thick and less flexible. It prevents collapse of vessels. So the vessels bleed for longer time. Cautery is also less effective on skin. It may cause skin burn.

To mite these problems Raney clip is applied on the edges. This clip applies pressure on the edge and stops bleeding. Before closure these clips are to be removed.

SURGIWEAR makes these clips in two sizes. One for adult & other for children.

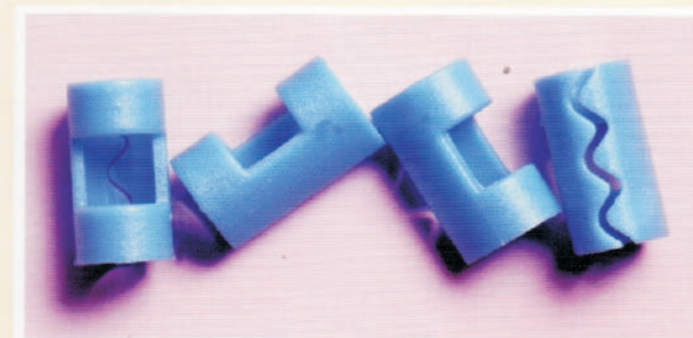
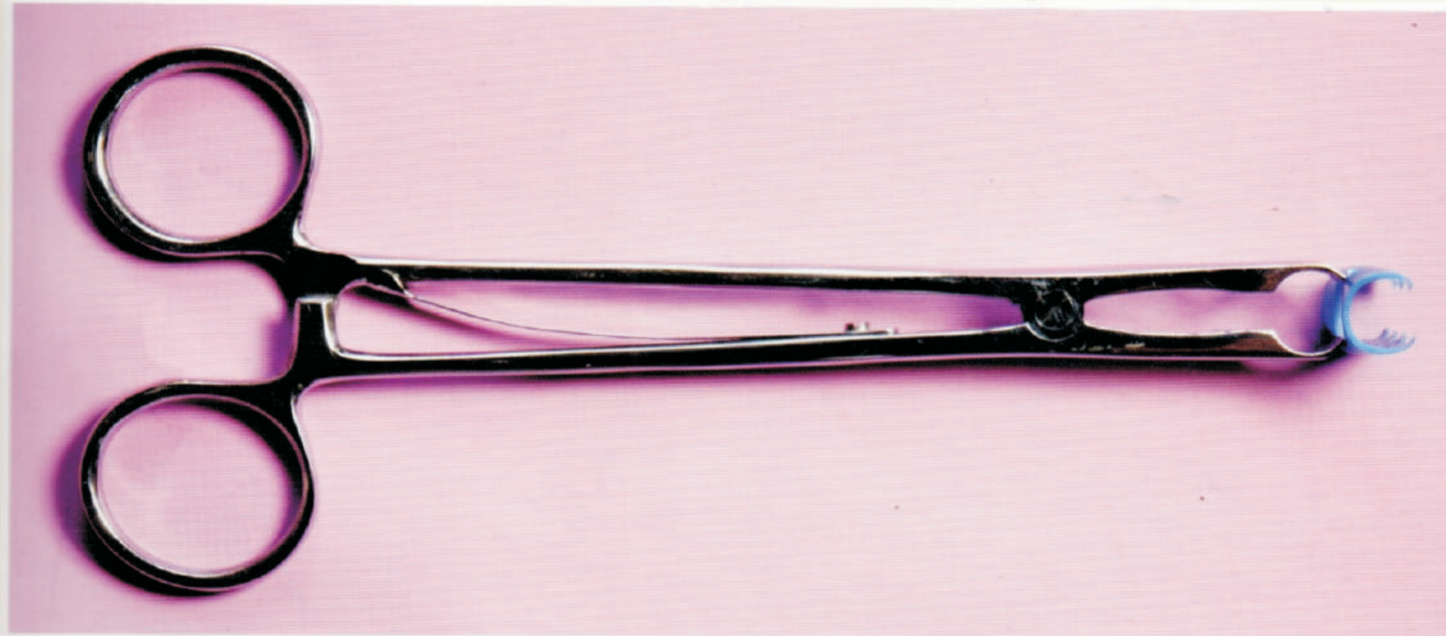
Presentation

Raney Clip is supplied presterilized in pack of 10.

Raney clip large RC01L

Raney clip small RC01S

Raney clip applicator instrument RCA01



Manufacturing Quality Products for

Neurosurgery	Cardiothoracic
	Laparoscopic
Orthopedics	Obst. Gynae
Ophthalmology	Burn Treatment
Plastic Surgery	Wound Dressing
Urosurgery	Emergency
Andrology	Pressure
	Dressing
	General Use

SURGIWEAR
EN ISO 13485 : 2012 COMPANY

Made in India by:
G. Surgiwear Limited
Rasoolpur Jahanganj, Shahjahanpur-242001
Tel: +91 5842-223818 Fax: +91 5842-222190
e.mail: surgiwear@hotmail.com
Delhi: 65454565, Mumbai: 66994258, Ahmedabad: 27545218

www.surgiwear.co.in